



ELECTRONIC COPY

DIAMOND REPORT

December 27, 2024	
IGI Report Number	654416814
Description	NATURAL DIAMOND
Shape and Cutting Style	ROUND BRILLIANT
Measurements	8.76 - 8.80 X 5.31 MM

GRADING RESULTS

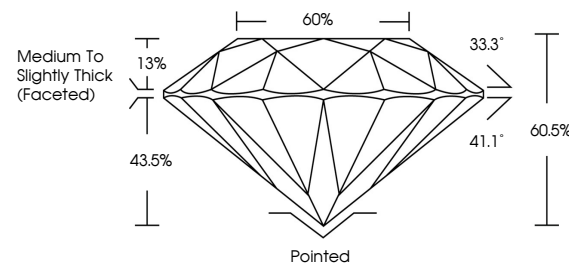
Carat Weight	2.52 CARATS
Color Grade	J
Clarity Grade	VS 2
Cut Grade	EXCELLENT

ADDITIONAL GRADING INFORMATION

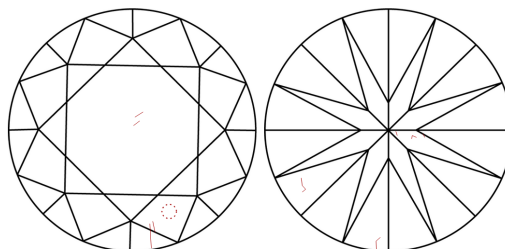
Polish	EXCELLENT
Symmetry	EXCELLENT
Fluorescence	NONE
Inscription(s)	 654416814
Comments: IDEAL CUT ROUND BRILLIANT	

654416814
Report verification at igi.org

PROPORTIONS

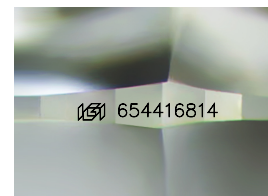


CLARITY CHARACTERISTICS



KEY TO SYMBOLS

Red symbols indicate internal characteristics.
Green symbols indicate external characteristics.



Sample Image Used

COLOR

D - F	G - J	K - M	N - R	S - Z	FANCY
Colorless	Near Colorless	Slightly Tinted	Very Light Color	Light Color	

CLARITY

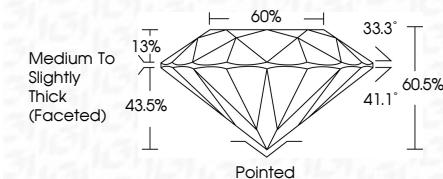
IF	VVS ¹⁻²	VS ¹⁻²	SI ¹⁻²	I ¹⁻³
Internally Flawless	Very Very Slightly Included	Very Slightly Included	Slightly Included	Included



December 27, 2024	
IGI Report Number	654416814
Description	NATURAL DIAMOND
Shape and Cutting Style	ROUND BRILLIANT
Measurements	8.76 - 8.80 X 5.31 MM

GRADING RESULTS

Carat Weight	2.52 CARATS
Color Grade	J
Clarity Grade	VS 2
Cut Grade	EXCELLENT



ADDITIONAL GRADING INFORMATION

Polish	EXCELLENT
Symmetry	EXCELLENT
Fluorescence	NONE
Inscription(s)	 654416814
Comments: IDEAL CUT ROUND BRILLIANT	



© IGI 2020, International Gemological Institute

FD - 10 20



THIS DOCUMENT WAS PRODUCED WITH THE FOLLOWING SECURITY MEASURES: SPECIAL DOCUMENT PAPER, INK SCREENS, WATERMARK, BACKGROUND DESIGNS, HOLOGRAM AND OTHER SECURITY FEATURES NOT LISTED AND DO EXCEED DOCUMENT SECURITY INDUSTRY GUIDELINES

www.igi.org

December 27, 2024	Carat Weight	Culet	Med T
GI Report No. 654416814	Color Grade	Polish	
ROUND ROUND BRILLIANT	Clarity Grade	Symmetry	
7.6 - 8.90 X 6.31 MM	Cut Grade	Fluorescence	
	Depth	Inclusions(s)	
	Table		
	Girdle		Comments:
			IDEAL CUT ROUND BRILLIANT