



ELECTRONIC COPY

DIAMOND REPORT

November 13, 2024	
IGI Report Number	654416517
Description	NATURAL DIAMOND
Shape and Cutting Style	ROUND BRILLIANT
Measurements	7.37 - 7.45 X 4.53 MM

GRADING RESULTS

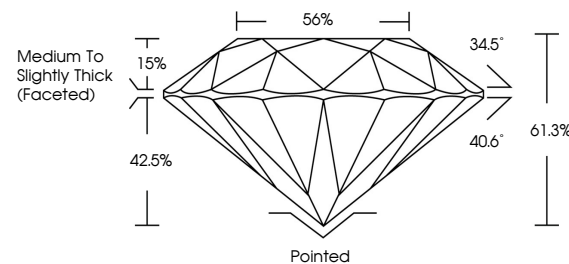
Carat Weight	1.52 CARAT
Color Grade	J
Clarity Grade	SI 1
Cut Grade	EXCELLENT

ADDITIONAL GRADING INFORMATION

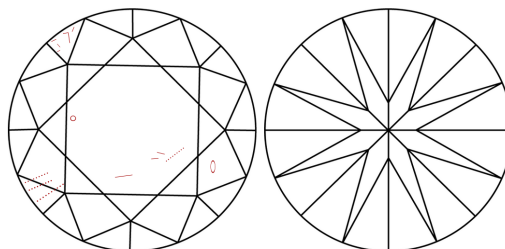
Polish	EXCELLENT
Symmetry	EXCELLENT
Fluorescence	NONE
Inscription(s)	 654416517
Comments: IDEAL CUT ROUND BRILLIANT	

654416517
Report verification at igi.org

PROPORTIONS

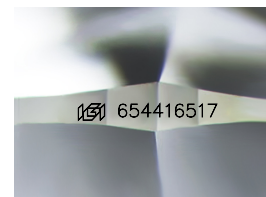


CLARITY CHARACTERISTICS



KEY TO SYMBOLS

Red symbols indicate internal characteristics.
Green symbols indicate external characteristics.



Sample Image Used

COLOR

D - F	G - J	K - M	N - R	S - Z	FANCY
Colorless	Near Colorless	Slightly Tinted	Very Light Color	Light Color	

CLARITY

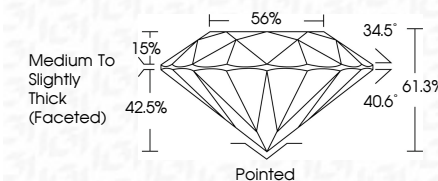
IF	VS ¹⁻²	VS ¹⁻²	SI ¹⁻²	I ¹⁻³
Internally Flawless	Very Very Slightly Included	Very Slightly Included	Slightly Included	Included



November 13, 2024	
IGI Report Number	654416517
Description	NATURAL DIAMOND
Shape and Cutting Style	ROUND BRILLIANT
Measurements	7.37 - 7.45 X 4.53 MM

GRADING RESULTS

Carat Weight	1.52 CARAT
Color Grade	J
Clarity Grade	SI 1
Cut Grade	EXCELLENT



ADDITIONAL GRADING INFORMATION

Polish	EXCELLENT
Symmetry	EXCELLENT
Fluorescence	NONE
Inscription(s)	 654416517
Comments: IDEAL CUT ROUND BRILLIANT	



IG



© IGI 2020, International Gemological Institute

FD - 10 20



THIS DOCUMENT WAS PRODUCED WITH THE FOLLOWING SECURITY MEASURES: SPECIAL DOCUMENT PAPER, INK SCREENS, WATERMARK, BACKGROUND DESIGNS, HOLOGRAM AND OTHER SECURITY FEATURES NOT LISTED AND DO EXCEED DOCUMENT SECURITY INDUSTRY GUIDELINE

November 13, 2024
IGI Report No 65416517
ROUND BRILLIANT

7.37" - 7.46 X 4.63 MM	1.62 CARAT	J	\$1	EXCELLENT	61.5%	56%	Medium to slightly Thick (faceted)	Pointed	EXCELLENT	EXCELLENT	NONE	100% 455/461/6512
Carat Weight	Color Grade	Clarity Grade	Cut Grade	Depth	Table	Girdle		Culet	Polish	Symmetry	Fluorescence	Inspection(s)

Comments: