



**ELECTRONIC COPY**

## DIAMOND REPORT

October 11, 2024	
IGI Report Number	654415970
Description	NATURAL DIAMOND
Shape and Cutting Style	ROUND BRILLIANT
Measurements	7.07 - 7.10 X 4.28 MM

## GRADING RESULTS

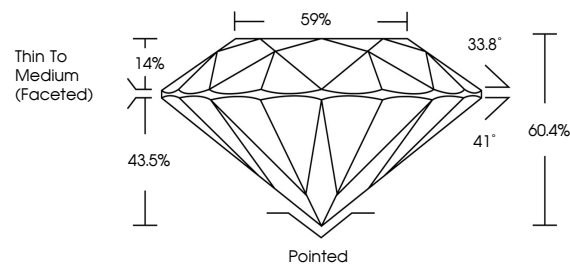
Carat Weight	1.31 CARAT
Color Grade	J
Clarity Grade	VS 1
Cut Grade	EXCELLENT

### ADDITIONAL GRADING INFORMATION

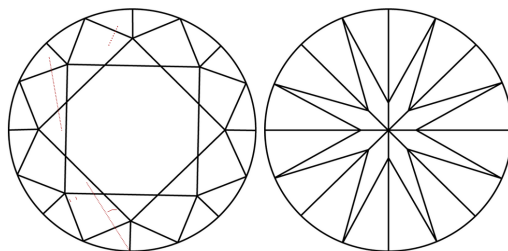
Polish	EXCELLENT
Symmetry	EXCELLENT
Fluorescence	NONE
Inscription(s)	 654415970
Comments: IDEAL CUT ROUND BRILLIANT	

654415970  
Report verification at [igi.org](http://igi.org)

## PROPORTIONS

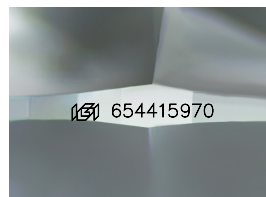


## CLARITY CHARACTERISTICS



## KEY TO SYMBOLS

Red symbols indicate internal characteristics.  
Green symbols indicate external characteristics.



Sample Image Used

## COLOR

D - F	G - J	K - M	N - R	S - Z	FANCY
Colorless	Near Colorless	Slightly Tinted	Very Light Color	Light Color	

## CLARITY

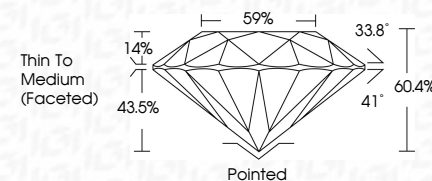
IF	WS <sup>1-2</sup>	VS <sup>1-2</sup>	SI <sup>1-2</sup>	I <sup>1-3</sup>
Internally Flawless	Very Very Slightly Included	Very Slightly Included	Slightly Included	Included



October 11, 2024	
IGI Report Number	654415970
Description	NATURAL DIAMOND
Shape and Cutting Style	ROUND BRILLIANT
Measurements	7.07 - 7.10 X 4.28 MM

## GRADING RESULTS

Carat Weight	1.31 CARAT
Color Grade	J
Clarity Grade	VS 1
Cut Grade	EXCELLENT



### ADDITIONAL GRADING INFORMATION

Polish	EXCELLENT
Symmetry	EXCELLENT
Fluorescence	NONE
Inscription(s)	(G) 654415970
Comments: IDEAL CUT ROUND BRILLIANT	



IGI



© IGI 2020, International Gemological Institute

FD - 10 20

**www.igi.org**



THIS DOCUMENT WAS PRODUCED WITH THE FOLLOWING SECURITY MEASURES: SPECIAL DOCUMENT PAPER, INK SCREENS, WATERMARK, BACKGROUND DESIGNS, HOLOGRAM AND OTHER SECURITY FEATURES NOT LISTED AND DO EXCEED DOCUMENT SECURITY INDUSTRY GUIDELINES

October 11, 2024  
IGI Report No 654415970  
ROUND BRILLIANT

1.07 - 7.10 x 4.28 MM	Carat Weight	VS1	1.31 CARAT
Color Grade	Clarity Grade	EXCELLENT	J
Depth	Cut Grade	60.4%	
Table		59%	
Grade		Thin To Medium Faceted	
Culet		Pointed	
Polish		EXCELLENT	
Symmetry		EXCELLENT	
Fluorescence		NONE	
Inscriptions			see 45411970

**Comments:**  
**IDEAL CUT ROUND BRILLIANT**