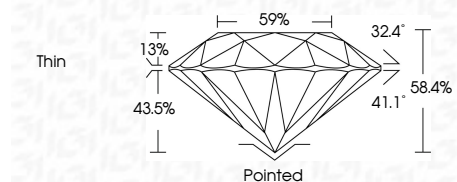




October 22, 2024
IGI Report Number **653421554**
Description **NATURAL DIAMOND**
Shape and Cutting Style **ROUND BRILLIANT**
Measurements **15.02 - 15.07 X 8.78 MM**

GRADING RESULTS
Carat Weight **11.67 CARATS**
Color Grade **K**
Clarity Grade **VVS 2**
Cut Grade **EXCELLENT**



ADDITIONAL GRADING INFORMATION
Polish **EXCELLENT**
Symmetry **EXCELLENT**
Fluorescence **VERY SLIGHT**
Inscription(s) **IGI 653421554**



October 22, 2024
IGI Report No **653421554**
ROUND BRILLIANT
15.02 - 15.07 X 8.78 MM
Carat Weight **11.67 CARATS**
Color Grade **K**
Clarity Grade **VVS 2**
Depth **EXCELLENT**
Table **58.4%**
Girdle **59%**
Thin
Pointed
Polish **EXCELLENT**
Symmetry **EXCELLENT**
Fluorescence **VERY SLIGHT**
Inscription(s) **IGI 653421554**

ELECTRONIC COPY

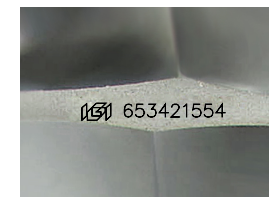
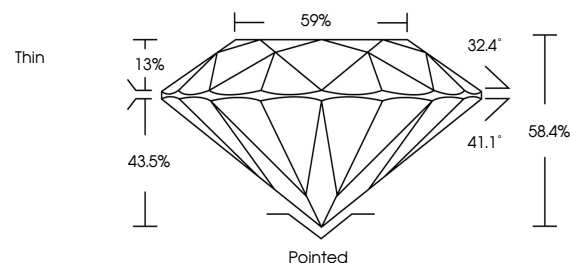
DIAMOND REPORT

October 22, 2024
IGI Report Number **653421554**
Description **NATURAL DIAMOND**
Shape and Cutting Style **ROUND BRILLIANT**
Measurements **15.02 - 15.07 X 8.78 MM**

GRADING RESULTS
Carat Weight **11.67 CARATS**
Color Grade **K**
Clarity Grade **VVS 2**
Cut Grade **EXCELLENT**

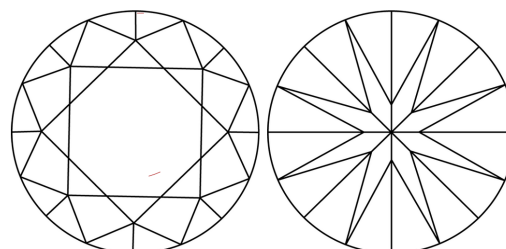
ADDITIONAL GRADING INFORMATION
Polish **EXCELLENT**
Symmetry **EXCELLENT**
Fluorescence **VERY SLIGHT**
Inscription(s) **IGI 653421554**

PROPORTIONS



Sample Image Used

CLARITY CHARACTERISTICS



KEY TO SYMBOLS

Red symbols indicate internal characteristics.
Green symbols indicate external characteristics.

COLOR

D - F	G - J	K - M	N - R	S - Z	FANCY
Colorless	Near Colorless	Slightly Tinted	Very Light Color	Light Color	

CLARITY

IF	VVS ¹⁻²	VS ¹⁻²	SI ¹⁻²	I ¹⁻³
Internally Flawless	Very Very Slightly Included	Very Slightly Included	Slightly Included	Included

