

**ELECTRONIC COPY**

## DIAMOND REPORT

October 9, 2024	
IGI Report Number	651485347
Description	NATURAL DIAMOND
Shape and Cutting Style	ROUND BRILLIANT
Measurements	6.83 - 6.88 X 4.20 MM

## GRADING RESULTS

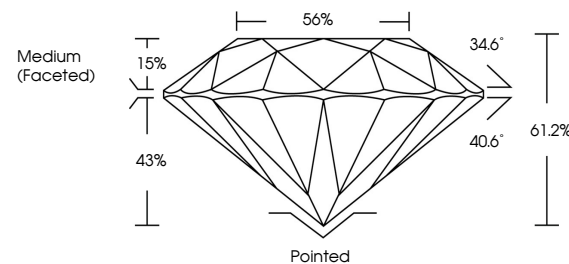
Carat Weight	1.21 CARAT
Color Grade	I
Clarity Grade	VS 2
Cut Grade	EXCELLENT

### ADDITIONAL GRADING INFORMATION

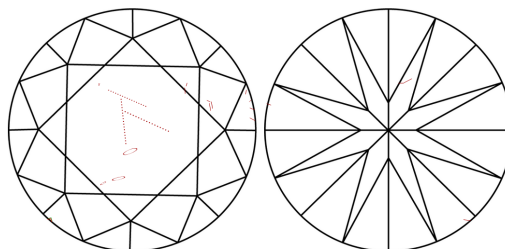
Polish	EXCELLENT
Symmetry	EXCELLENT
Fluorescence	NONE
Inscription(s)	 651485347
Comments: IDEAL CUT ROUND BRILLIANT	

651485347  
Report verification at [igi.org](https://igi.org)

## PROPORTIONS

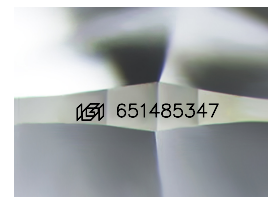


## CLARITY CHARACTERISTICS



## KEY TO SYMBOLS

Red symbols indicate internal characteristics.  
Green symbols indicate external characteristics.



Sample Image Used

**COLOR**

D - F	G - J	K - M	N - R	S - Z	FANCY
Colorless	Near Colorless	Slightly Tinted	Very Light Color	Light Color	

## CLARITY

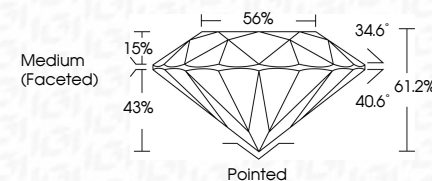
IF	VVS <sup>1-2</sup>	VS <sup>1-2</sup>	SI <sup>1-2</sup>	I <sup>1-3</sup>
Internally Flawless	Very Very Slightly Included	Very Slightly Included	Slightly Included	Included



October 9, 2024	
IGI Report Number	651485347
Description	NATURAL DIAMOND
Shape and Cutting Style	ROUND BRILLIANT
Measurements	6.83 - 6.88 X 4.20 MM

## GRADING RESULTS

Carat Weight	1.21 CARAT
Color Grade	I
Clarity Grade	VS 2
Cut Grade	EXCELLENT



### ADDITIONAL GRADING INFORMATION

Polish	EXCELLENT
Symmetry	EXCELLENT
Fluorescence	NONE
Inscription(s)	(GSI) 651485347
Comments: IDEAL CUT ROUND BRILLIANT	



© IGI 2020, International Gemological Institute

FD - 10 20

**www.igi.org**

THIS DOCUMENT WAS PRODUCED WITH THE FOLLOWING SECURITY MEASURES: SPECIAL DOCUMENT PAPER, INK SCREENS, WATERMARK, BACKGROUND DESIGNS, HOLOGRAM AND OTHER SECURITY FEATURES NOT LISTED AND DO EXCEED DOCUMENT SECURITY INDUSTRY GUIDELINE

October 9, 2024	Med	
GI Report No. 651485347		
ROUND BRILLIANT		
Carat Weight		
Color Grade		
Clarity Grade		
Cut Grade		
Depth		
Table		
Girdle		
Culet		
Polish		
Symmetry		
Fluorescence		
Inscription(s)		
Comments:		
IDEAL CUT ROUND BRILLIANT		