



ELECTRONIC COPY

DIAMOND REPORT

October 7, 2024	
IGI Report Number	651485341
Description	NATURAL DIAMOND
Shape and Cutting Style	ROUND BRILLIANT
Measurements	6.97 - 6.98 X 4.12 MM

GRADING RESULTS

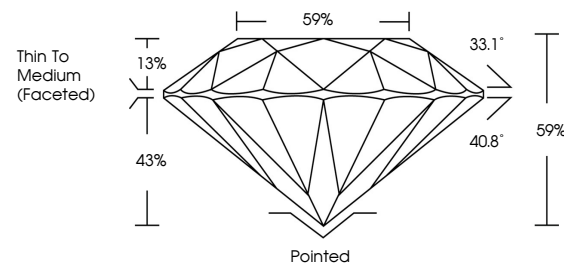
Carat Weight	1.20 CARAT
Color Grade	J
Clarity Grade	VS 2
Cut Grade	EXCELLENT

ADDITIONAL GRADING INFORMATION

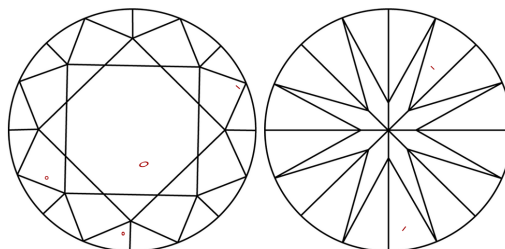
Polish	EXCELLENT
Symmetry	EXCELLENT
Fluorescence	NONE
Inscription(s)	 651485341
Comments: IDEAL CUT ROUND BRILLIANT	

651485341
Report verification at igi.org

PROPORTIONS

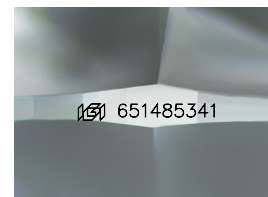


CLARITY CHARACTERISTICS



KEY TO SYMBOLS

Red symbols indicate internal characteristics.
Green symbols indicate external characteristics.



Sample Image Used

COLOR

D - F	G - J	K - M	N - R	S - Z	FANCY
Colorless	Near Colorless	Slightly Tinted	Very Light Color	Light Color	

CLARITY

IF	VVS ¹⁻²	VS ¹⁻²	SI ¹⁻²	I ¹⁻³
Internally Flawless	Very Very Slightly Included	Very Slightly Included	Slightly Included	Included



© IGI 2020, International Gemological Institute

FD - 10 20

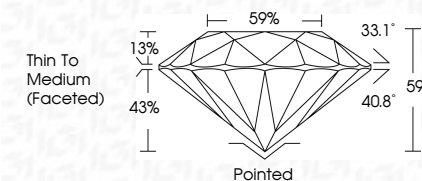
DIAMOND REPORT



October 7, 2024	
IGI Report Number	651485341
Description	NATURAL DIAMOND
Shape and Cutting Style	ROUND BRILLIANT
Measurements	6.97 - 6.98 X 4.12 MM

GRADING RESULTS

Carat Weight	1.20 CARAT
Color Grade	J
Clarity Grade	VS 2
Cut Grade	EXCELLENT



ADDITIONAL GRADING INFORMATION

Polish	EXCELLENT
Symmetry	EXCELLENT
Fluorescence	NONE
Inscription(s)	 651485341
Comments: IDEAL CUT ROUND BRILLIANT	



IG

October 7, 2024
GI Report No 651485341
ROUND BRILLIANT

Carat Weight	1.20 CARAT
Color Grade	J
Clarity Grade	VS 2
Cut Grade	EXCELLENT
Depth	59%
Table	59%
Girdle	Thin To Medium (faced=0)
Culet	Pointed
Polish	EXCELLENT
Symmetry	EXCELLENT
Fluorescence	NONE
Production Co.	JOHN J. WELLS

Comments: