



ELECTRONIC COPY

DIAMOND REPORT

September 24, 2024	
IGI Report Number	651449029
Description	NATURAL DIAMOND
Shape and Cutting Style	ROUND BRILLIANT
Measurements	7.18 - 7.22 X 4.43 MM

GRADING RESULTS

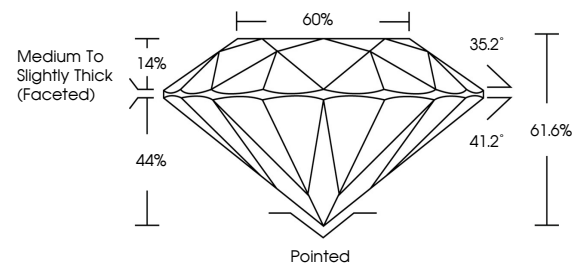
Carat Weight	1.42 CARAT
Color Grade	G
Clarity Grade	SI 2
Cut Grade	EXCELLENT

ADDITIONAL GRADING INFORMATION

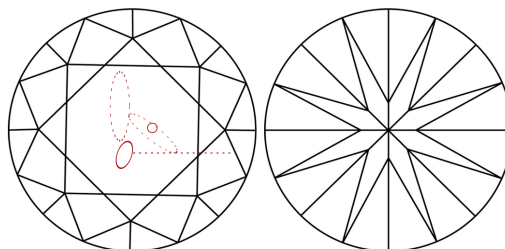
Polish	EXCELLENT
Symmetry	EXCELLENT
Fluorescence	NONE
Inscription(s)	 651449029
Comments: IDEAL CUT ROUND BRILLIANT	

651449029
Report verification at igi.org

PROPORTIONS

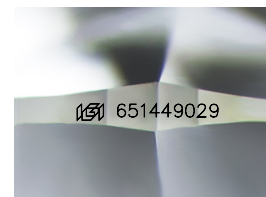


CLARITY CHARACTERISTICS



KEY TO SYMBOLS

Red symbols indicate internal characteristics.
Green symbols indicate external characteristics.



Sample Image Used

COLOR

D - F	G - J	K - M	N - R	S - Z	FANCY
Colorless	Near Colorless	Slightly Tinted	Very Light Color	Light Color	

CLARITY

IF	VVS ¹⁻²	VS ¹⁻²	SI ¹⁻²	I ¹⁻³
Internally Flawless	Very Very Slightly Included	Very Slightly Included	Slightly Included	Included



© IGI 2020, International Gemological Institute

FD - 10 20

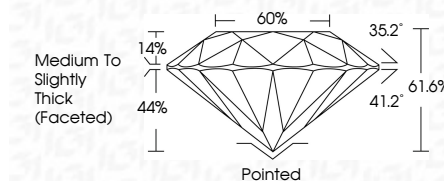
DIAMOND REPORT



September 24, 2024	
IGI Report Number	651449029
Description	NATURAL DIAMOND
Shape and Cutting Style	ROUND BRILLIANT
Measurements	7.18 - 7.22 X 4.43 MM

GRADING RESULTS

Carat Weight	1.42 CARAT
Color Grade	G
Clarity Grade	S1 2
Cut Grade	EXCELLENT



ADDITIONAL GRADING INFORMATION

Polish	EXCELLENT
Symmetry	EXCELLENT
Fluorescence	NONE
Inscription(s)	(GSI) 651449029
Comments: IDEAL CUT ROUND BRILLIANT	



IG

September 24, 2024
 IGI Report No 651449029
 ROUND BRILLIANT

7.18 - 7.22 X 4.43 MM

7.18 - 7.22 X 4.43 MM	1.42 CARAT	G
Carat Weight		
Color Grade		

Color Grade	G
Clarity Grade	SI2

Crinity Grade	EXCELLENT	61.6%
Cut Grade		
Depth		

	61.6%	60%
Depth		
Table		

Girdle	Medium To Slightly Thick (Faceted)
--------	------------------------------------

Culet	Pointed
-------	---------

Polish	EXCELLENT
Symmetry	EXCELLENT

651410720

Comments:
IDEAL CUT ROUND BRILLIANT