



**ELECTRONIC COPY**

651447453  
Report verification at [igi.org](http://igi.org)



September 16, 2024  
IGI Report Number **651447453**  
Description **NATURAL DIAMOND**  
Shape and Cutting Style **PEAR BRILLIANT**  
Measurements **20.43 X 12.17 X 7.32 MM**  
**GRADING RESULTS**  
Carat Weight **11.05 CARATS**  
Color Grade **L**  
Clarity Grade **VS 1**  
Cut Grade **VERY GOOD**

**DIAMOND REPORT**

September 16, 2024  
IGI Report Number **651447453**  
Description **NATURAL DIAMOND**  
Shape and Cutting Style **PEAR BRILLIANT**  
Measurements **20.43 X 12.17 X 7.32 MM**

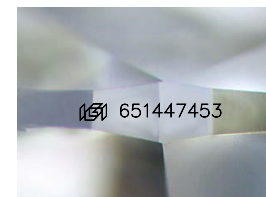
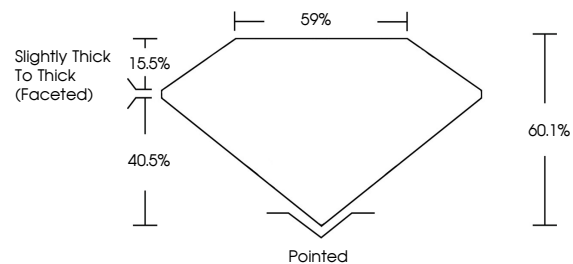
**GRADING RESULTS**

Carat Weight **11.05 CARATS**  
Color Grade **L**  
Clarity Grade **VS 1**  
Cut Grade **VERY GOOD**

**ADDITIONAL GRADING INFORMATION**

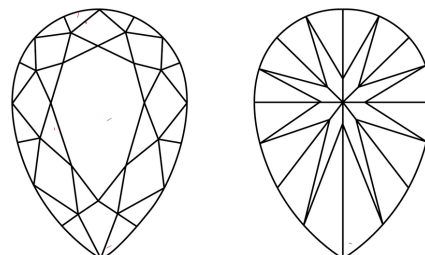
Polish **EXCELLENT**  
Symmetry **EXCELLENT**  
Fluorescence **VERY SLIGHT**  
Inscription(s) **651447453**

**PROPORTIONS**



Sample Image Used

**CLARITY CHARACTERISTICS**



**KEY TO SYMBOLS**

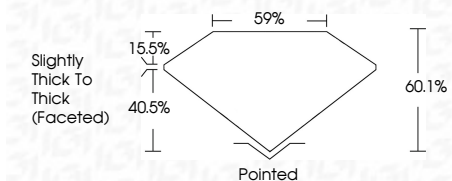
Red symbols indicate internal characteristics.  
Green symbols indicate external characteristics.

**COLOR**

D - F	G - J	K - M	N - R	S - Z	FANCY
Colorless	Near Colorless	Slightly Tinted	Very Light Color	Light Color	

**CLARITY**

IF	VS <sup>1-2</sup>	VS <sup>1-2</sup>	SI <sup>1-2</sup>	I <sup>1-3</sup>
Internally Flawless	Very Very Slightly Included	Very Slightly Included	Slightly Included	Included



**ADDITIONAL GRADING INFORMATION**

Polish **EXCELLENT**  
Symmetry **EXCELLENT**  
Fluorescence **VERY SLIGHT**  
Inscription(s) **651447453**



**IGI**

September 16, 2024  
IGI Report No. 651447453  
**PEAR BRILLIANT**  
11.05 CARATS **L**  
Color Grade **VERY GOOD**  
Clarity Grade **VS 1**  
Depth **60.1%**  
Table **59%**  
Girdle **Slightly Thick To Thick (Faceted)**  
Culet **Pointed**  
Polish **EXCELLENT**  
Symmetry **EXCELLENT**  
Fluorescence **VERY SLIGHT**  
Inscription(s) **651447453**