



# INTERNATIONAL GEMOLOGICAL INSTITUTE

ELECTRONIC COPY

649448514



October 7, 2024

IGI Report Number 649448514

ROUND BRILLIANT

NATURAL DIAMOND

5.38 - 5.45 X 3.32 MM

Carat Weight 0.60 CARAT

Color Grade K

Clarity Grade VS 1

Cut Grade EXCELLENT

Polish EXCELLENT

Symmetry EXCELLENT

Fluorescence VERY SLIGHT

Inscription(s) IGI 649448514

Comments: IDEAL CUT ROUND  
BRILLIANT

## DIAMOND REPORT

October 7, 2024

IGI Report Number

649448514

Description

NATURAL DIAMOND

Shape and Cutting Style

ROUND BRILLIANT

Measurements

5.38 - 5.45 X 3.32 MM

## GRADING RESULTS

Carat Weight 0.60 CARAT

Color Grade K

Clarity Grade VS 1

Cut Grade EXCELLENT

## ADDITIONAL GRADING INFORMATION

Polish EXCELLENT

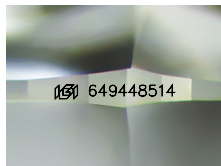
Symmetry EXCELLENT

Fluorescence VERY SLIGHT

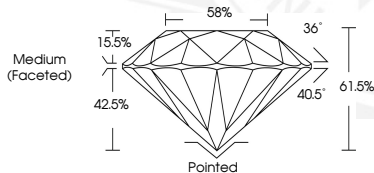
Identification Features FEATHER

Inscription(s) IGI 649448514

Comments: IDEAL CUT ROUND BRILLIANT



Sample Image Used



October 7, 2024

IGI Report Number 649448514

ROUND BRILLIANT

NATURAL DIAMOND

5.38 - 5.45 X 3.32 MM

Carat Weight 0.60 CARAT

Color Grade K

Clarity Grade VS 1

Cut Grade EXCELLENT

Polish EXCELLENT

Symmetry EXCELLENT

Fluorescence VERY SLIGHT

Inscription(s) IGI 649448514

Comments: IDEAL CUT ROUND  
BRILLIANT



THIS DOCUMENT WAS PRODUCED WITH THE FOLLOWING SECURITY MEASURES: SPECIAL DOCUMENT PAPER, INK SCREENS, WATERMARK, BACKGROUND DESIGNS, HOLOGRAM AND OTHER SECURITY FEATURES NOT LISTED AND DO EXCEED DOCUMENT SECURITY INDUSTRY GUIDELINES.

For terms & conditions and to verify this report, please visit [www.igi.org](http://www.igi.org)