



ELECTRONIC COPY

649438171
Report verification at igi.org



September 4, 2024
IGI Report Number **649438171**
Description **NATURAL DIAMOND**
Shape and Cutting Style **ROUND BRILLIANT**
Measurements **7.03 - 7.10 X 4.49 MM**

GRADING RESULTS

Carat Weight **1.40 CARAT**
Color Grade **H**
Clarity Grade **VS 2**
Cut Grade **EXCELLENT**

DIAMOND REPORT

September 4, 2024
IGI Report Number **649438171**
Description **NATURAL DIAMOND**
Shape and Cutting Style **ROUND BRILLIANT**
Measurements **7.03 - 7.10 X 4.49 MM**

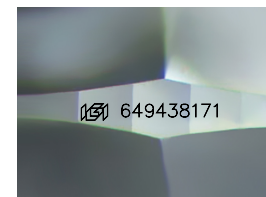
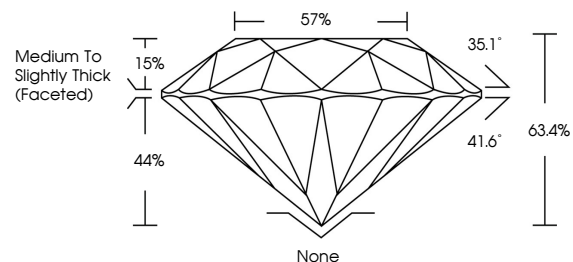
GRADING RESULTS

Carat Weight **1.40 CARAT**
Color Grade **H**
Clarity Grade **VS 2**
Cut Grade **EXCELLENT**

ADDITIONAL GRADING INFORMATION

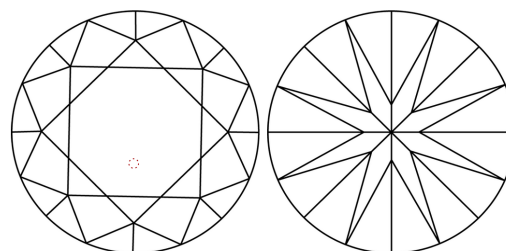
Polish **EXCELLENT**
Symmetry **EXCELLENT**
Fluorescence **STRONG**
Inscription(s) **649438171**

PROPORTIONS



Sample Image Used

CLARITY CHARACTERISTICS



KEY TO SYMBOLS

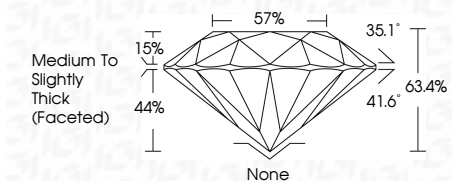
Red symbols indicate internal characteristics.
Green symbols indicate external characteristics.

COLOR

D - F	G - J	K - M	N - R	S - Z	FANCY
Colorless	Near Colorless	Slightly Tinted	Very Light Color	Light Color	

CLARITY

IF	VS ¹⁻²	VS ¹⁻²	SI ¹⁻²	I ¹⁻³
Internally Flawless	Very Very Slightly Included	Very Slightly Included	Slightly Included	Included



ADDITIONAL GRADING INFORMATION

Polish **EXCELLENT**
Symmetry **EXCELLENT**
Fluorescence **STRONG**
Inscription(s) **649438171**



IGI

September 4, 2024
IGI Report No. 649438171
ROUND BRILLIANT
7.03 - 7.10 X 4.49 MM
1.40 CARAT
H
VS 2
EXCELLENT
63.4%
57%
Medium to Slightly Thick (Faceted)
None
EXCELLENT
EXCELLENT
STRONG
649438171