

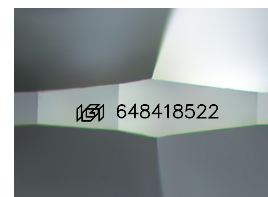
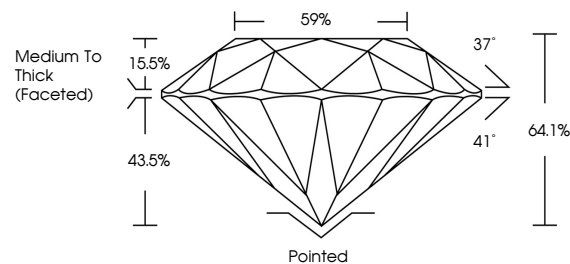


ELECTRONIC COPY

DIAMOND REPORT

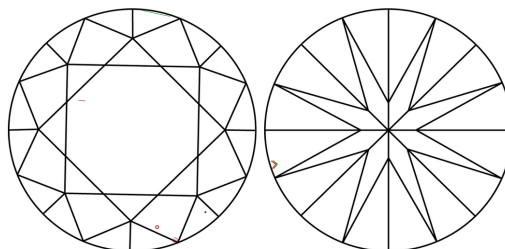
648418522
Report verification at igi.org

PROPORTIONS



Sample Image Used

CLARITY CHARACTERISTICS



KEY TO SYMBOLS

Red symbols indicate internal characteristics.
Green symbols indicate external characteristics.

COLOR

| D - F | G - J | K - M | N - R | S - Z | FANCY |
|-----------|----------------|-----------------|------------------|-------------|-------|
| Colorless | Near Colorless | Slightly Tinted | Very Light Color | Light Color | |

CLARITY

| IF | VVS ¹⁻² | VS ¹⁻² | SI ¹⁻² | I ¹⁻³ |
|---------------------|-----------------------------|------------------------|-------------------|------------------|
| Internally Flawless | Very Very Slightly Included | Very Slightly Included | Slightly Included | Included |



April 15, 2025

IGI Report Number 648418522

| | |
|-------------|-----------------|
| Description | NATURAL DIAMOND |
|-------------|-----------------|

Shape and Cutting Style **ROUND BRILLIANT**

Measurements 8.95 - 9.04 X 5.77 MM

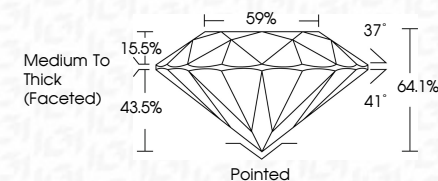
GRADING RESULTS

Carat Weight **3.00 CARATS**

Color Grade H

Clarity Grade VS 1

Cut Grade **VERY GOOD**



ADDITIONAL GRADING INFORMATION

Polish **EXCELLENT**Symmetry **VERY GOOD**Fluorescence **NONE**Inscription(s) 648418522

© IGI 2020, International Gemological Institute

FD - 10 20

www.igi.org



THIS DOCUMENT WAS PRODUCED WITH THE FOLLOWING SECURITY MEASURES: SPECIAL DOCUMENT PAPER, INK SCREENS, WATERMARK, BACKGROUND DESIGNS, HOLOGRAM AND OTHER SECURITY FEATURES NOT LISTED AND DO EXCEED DOCUMENT SECURITY INDUSTRY GUIDELINES

April 15, 2025
IGI Report No 648418522
ROUND BRILLIANT

8.95 - 9.04 X 5.77 MM
Carat Weight
3.00 CARATS
Color Grade

| Color Grade | VS 1 | VERY GOOD |
|---------------|------|-----------|
| Clarity Grade | | |
| Cut Grade | | |

| | |
|--------|------------------------------|
| Depth | 64.1% |
| Table | 59% |
| Girdle | Medium To Thick (Faceted) |

| | Pointed | (rounded) |
|---------|---------|-----------|
| Culet | | |
| Polish | | |
| Summary | | |

| Symmetry | VERY GOOD |
|----------------|-----------|
| Fluorescence | NONE |
| Inscription(s) | 64941852 |

(59) 048418622