



**INTERNATIONAL  
GEMOLOGICAL  
INSTITUTE**

**ELECTRONIC COPY**

**648405224**



October 16, 2024  
IGI Report Number **648405224**  
**ROUND BRILLIANT**  
**NATURAL DIAMOND**  
4.68 - 4.70 X 2.92 MM  
Carat Weight **0.40 CARAT**  
Color Grade **J**  
Clarity Grade **SI 2**  
Cut Grade **EXCELLENT**  
Polish **EXCELLENT**  
Symmetry **EXCELLENT**  
Fluorescence **NONE**  
Inscription(s) **(IGI) 648405224**

**DIAMOND REPORT**

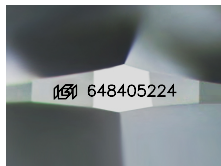
October 16, 2024  
IGI Report Number **648405224**  
Description **NATURAL DIAMOND**  
Shape and Cutting Style **ROUND BRILLIANT**  
Measurements **4.68 - 4.70 X 2.92 MM**

**GRADING RESULTS**

Carat Weight **0.40 CARAT**  
Color Grade **J**  
Clarity Grade **SI 2**  
Cut Grade **EXCELLENT**

**ADDITIONAL GRADING INFORMATION**

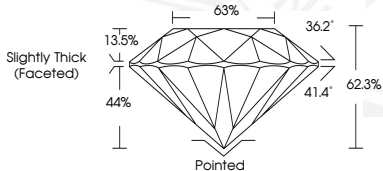
Polish **EXCELLENT**  
Symmetry **EXCELLENT**  
Fluorescence **NONE**  
Identification Features **FEATHER, CLOUD**  
Inscription(s) **(IGI) 648405224**



Sample Image Used



October 16, 2024  
IGI Report Number **648405224**  
**ROUND BRILLIANT**  
**NATURAL DIAMOND**  
4.68 - 4.70 X 2.92 MM  
Carat Weight **0.40 CARAT**  
Color Grade **J**  
Clarity Grade **SI 2**  
Cut Grade **EXCELLENT**  
Polish **EXCELLENT**  
Symmetry **EXCELLENT**  
Fluorescence **NONE**  
Inscription(s) **(IGI) 648405224**



 THIS DOCUMENT WAS PRODUCED WITH THE FOLLOWING SECURITY MEASURES: SPECIAL DOCUMENT PAPER, INK SCREENS, WATERMARK, BACKGROUND DESIGNS, HOLOGRAM AND OTHER SECURITY FEATURES NOT LISTED AND DO EXCEED DOCUMENT SECURITY INDUSTRY GUIDELINES.

For terms & conditions and to verify this report, please visit [www.igi.org](http://www.igi.org)