



# INTERNATIONAL GEMOLOGICAL INSTITUTE

## DIAMOND REPORT

October 5, 2024  
IGI Report Number **648403543**  
Description **NATURAL DIAMOND**  
Shape and Cutting Style **ROUND BRILLIANT**  
Measurements **5.69 - 5.76 X 3.41 MM**

## GRADING RESULTS

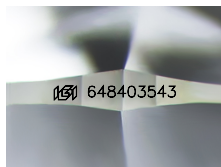
Carat Weight **0.70 CARAT**  
Color Grade **I**  
Clarity Grade **SI 1**  
Cut Grade **EXCELLENT**

## ADDITIONAL GRADING INFORMATION

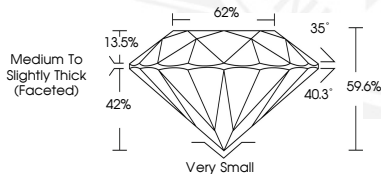
Polish **EXCELLENT**  
Symmetry **EXCELLENT**  
Fluorescence **NONE**  
Identification Features **CRYSTAL, FEATHER, CLOUD**  
Inscription(s) **(IGI) 648403543**

ELECTRONIC COPY

648403543



Sample Image Used



October 5, 2024  
IGI Report Number **648403543**  
ROUND BRILLIANT  
NATURAL DIAMOND  
5.69 - 5.76 X 3.41 MM  
Carat Weight **0.70 CARAT**  
Color Grade **I**  
Clarity Grade **SI 1**  
Cut Grade **EXCELLENT**  
Polish **EXCELLENT**  
Symmetry **EXCELLENT**  
Fluorescence **NONE**  
Inscription(s) **(IGI) 648403543**



October 5, 2024  
IGI Report Number **648403543**  
ROUND BRILLIANT  
NATURAL DIAMOND  
5.69 - 5.76 X 3.41 MM  
Carat Weight **0.70 CARAT**  
Color Grade **I**  
Clarity Grade **SI 1**  
Cut Grade **EXCELLENT**  
Polish **EXCELLENT**  
Symmetry **EXCELLENT**  
Fluorescence **NONE**  
Inscription(s) **(IGI) 648403543**



THIS DOCUMENT WAS PRODUCED WITH THE FOLLOWING SECURITY MEASURES: SPECIAL DOCUMENT PAPER, INK SCREENS, WATERMARK, BACKGROUND DESIGNS, HOLOGRAM AND OTHER SECURITY FEATURES NOT LISTED AND DO EXCEED DOCUMENT SECURITY INDUSTRY GUIDELINES.

For terms & conditions and to verify this report, please visit [www.igi.org](http://www.igi.org)