



**ELECTRONIC COPY**

645473567  
Report verification at [igi.org](http://igi.org)



August 1, 2024  
IGI Report Number **645473567**  
Description **NATURAL DIAMOND**  
Shape and Cutting Style **CUT CORNERED  
RECTANGULAR MODIFIED  
BRILLIANT**  
Measurements **11.60 X 8.41 X 5.68 MM**  
**GRADING RESULTS**  
Carat Weight **4.37 CARATS**  
Color Grade **E**  
Clarity Grade **SI 2**  
Cut Grade **VERY GOOD**

**DIAMOND REPORT**

August 1, 2024  
IGI Report Number **645473567**  
Description **NATURAL DIAMOND**  
Shape and Cutting Style **CUT CORNERED RECTANGULAR  
MODIFIED BRILLIANT**  
Measurements **11.60 X 8.41 X 5.68 MM**

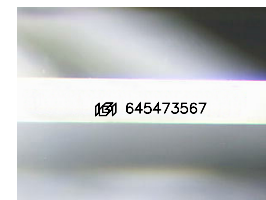
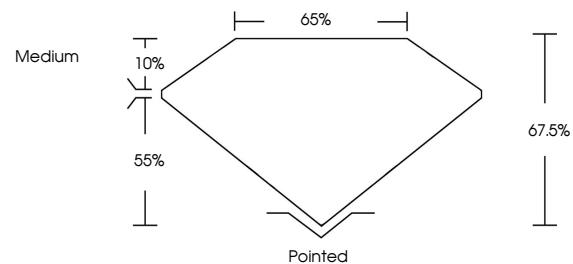
**GRADING RESULTS**

Carat Weight **4.37 CARATS**  
Color Grade **E**  
Clarity Grade **SI 2**  
Cut Grade **VERY GOOD**

**ADDITIONAL GRADING INFORMATION**

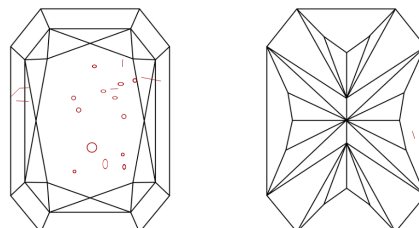
Polish **EXCELLENT**  
Symmetry **EXCELLENT**  
Fluorescence **VERY SLIGHT**  
Inscription(s) **645473567**

**PROPORTIONS**



Sample Image Used

**CLARITY CHARACTERISTICS**



**KEY TO SYMBOLS**

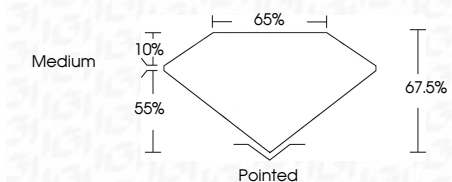
Red symbols indicate internal characteristics.  
Green symbols indicate external characteristics.

**COLOR**

D - F	G - J	K - M	N - R	S - Z	FANCY
Colorless	Near Colorless	Slightly Tinted	Very Light Color	Light Color	

**CLARITY**

IF	VS <sup>1-2</sup>	VS <sup>1-2</sup>	SI <sup>1-2</sup>	I <sup>1-3</sup>
Internally Flawless	Very Very Slightly Included	Very Slightly Included	Slightly Included	Included



**ADDITIONAL GRADING INFORMATION**

Polish **EXCELLENT**  
Symmetry **EXCELLENT**  
Fluorescence **VERY SLIGHT**  
Inscription(s) **645473567**



**IGI**

August 1, 2024  
IGI Report No. 645473567  
CUT CORNERED RECT. MODIFIED BRILLIANT  
11.60 X 8.41 X 5.68 MM  
4.37 CARATS  
E  
SI 2  
VERY GOOD  
67.6%  
65%  
Medium  
Pointed  
EXCELLENT  
EXCELLENT  
VERY SLIGHT  
645473567