



# INTERNATIONAL GEMOLOGICAL INSTITUTE

## DIAMOND REPORT

October 10, 2024

IGI Report Number

645437563

Description

NATURAL DIAMOND

Shape and Cutting Style

ROUND BRILLIANT

Measurements

5.47 - 5.49 X 3.31 MM

## GRADING RESULTS

Carat Weight

0.60 CARAT

Color Grade

K

Clarity Grade

VS 2

Cut Grade

EXCELLENT

## ADDITIONAL GRADING INFORMATION

Polish

EXCELLENT

Symmetry

EXCELLENT

Fluorescence

VERY SLIGHT

Identification Features

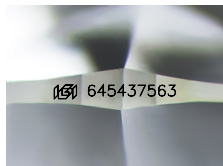
FEATHER, CRYSTAL CLOUD

Inscription(s)

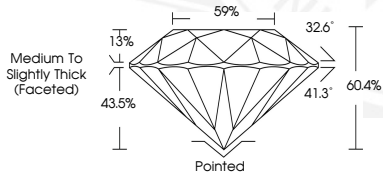
IGI 645437563

ELECTRONIC COPY

645437563



Sample Image Used



Medium To  
Slightly Thick  
(Faceted)

Pointed



October 10, 2024

IGI Report Number 645437563

ROUND BRILLIANT

NATURAL DIAMOND

5.47 - 5.49 X 3.31 MM

Carat Weight 0.60 CARAT

Color Grade K

Clarity Grade VS 2

Cut Grade EXCELLENT

Polish EXCELLENT

Symmetry EXCELLENT

Fluorescence VERY SLIGHT

Inscription(s) IGI 645437563



October 10, 2024

IGI Report Number 645437563

ROUND BRILLIANT

NATURAL DIAMOND

5.47 - 5.49 X 3.31 MM

Carat Weight 0.60 CARAT

Color Grade K

Clarity Grade VS 2

Cut Grade EXCELLENT

Polish EXCELLENT

Symmetry EXCELLENT

Fluorescence VERY SLIGHT

Inscription(s) IGI 645437563



THIS DOCUMENT WAS PRODUCED WITH THE FOLLOWING SECURITY MEASURES: SPECIAL DOCUMENT PAPER, INK SCREENS, WATERMARK, BACKGROUND DESIGNS, HOLOGRAM AND OTHER SECURITY FEATURES NOT LISTED AND DO EXCEED DOCUMENT SECURITY INDUSTRY GUIDELINES.

For terms & conditions and to verify this report, please visit [www.igi.org](http://www.igi.org)