



ELECTRONIC COPY

645414513
Report verification at igi.org



September 13, 2024
IGI Report Number **645414513**
Description **NATURAL DIAMOND**
Shape and Cutting Style **EMERALD CUT**
Measurements **8.40 X 6.01 X 4.11 MM**
GRADING RESULTS
Carat Weight **2.01 CARATS**
Color Grade **J**
Clarity Grade **VVS 1**
Cut Grade **VERY GOOD**

DIAMOND REPORT

September 13, 2024
IGI Report Number **645414513**
Description **NATURAL DIAMOND**
Shape and Cutting Style **EMERALD CUT**
Measurements **8.40 X 6.01 X 4.11 MM**

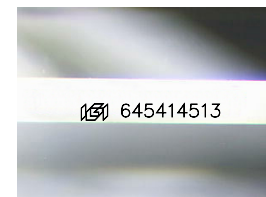
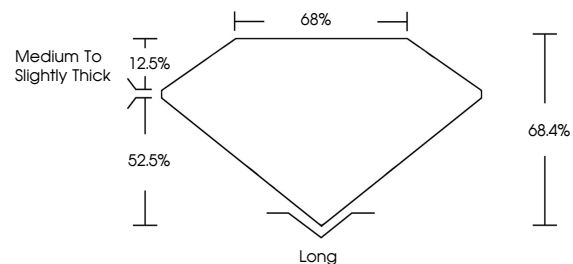
GRADING RESULTS

Carat Weight **2.01 CARATS**
Color Grade **J**
Clarity Grade **VVS 1**
Cut Grade **VERY GOOD**

ADDITIONAL GRADING INFORMATION

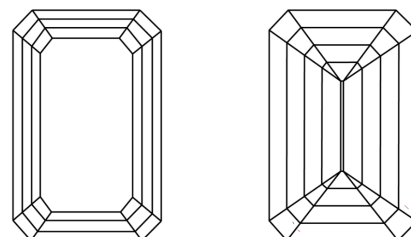
Polish **EXCELLENT**
Symmetry **EXCELLENT**
Fluorescence **NONE**
Inscription(s) **645414513**

PROPORTIONS



Sample Image Used

CLARITY CHARACTERISTICS



KEY TO SYMBOLS

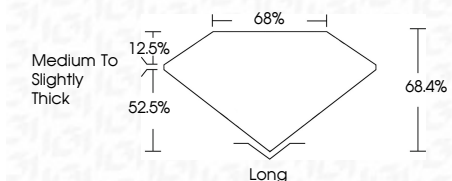
Red symbols indicate internal characteristics.
Green symbols indicate external characteristics.

COLOR

D - F	G - J	K - M	N - R	S - Z	FANCY
Colorless	Near Colorless	Slightly Tinted	Very Light Color	Light Color	

CLARITY

IF	VS ¹⁻²	VS ¹⁻²	SI ¹⁻²	I ¹⁻³
Internally Flawless	Very Very Slightly Included	Very Slightly Included	Slightly Included	Included



ADDITIONAL GRADING INFORMATION

Polish **EXCELLENT**
Symmetry **EXCELLENT**
Fluorescence **NONE**
Inscription(s) **645414513**



IGI

September 13, 2024
IGI Report No. 645414513
EMERALD CUT
8.40 X 6.01 X 4.11 MM
2.01 CARATS
J
VVS 1
VERY GOOD
84.4%
68%
Medium to Slightly Thick
Long
EXCELLENT
EXCELLENT
NONE
 645414513