

GIA NATURAL DIAMOND GRADING REPORT

December 08, 2022

GIA Report Number 6452316729

Shape and Cutting Style Modified Shield Step Cut

Measurements 5.70 x 8.28 x 2.23 mm

GRADING RESULTS

Carat Weight 1.09 carat

Color Grade D

Clarity Grade SI2

ADDITIONAL GRADING INFORMATION

Polish Excellent

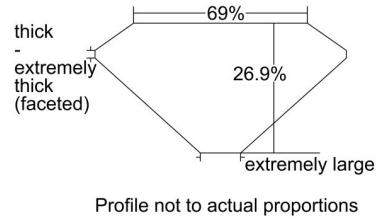
Symmetry Very Good

Fluorescence Faint

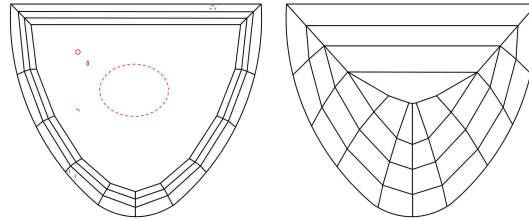
Inscription(s): GIA 6452316729

Comments: Additional clouds, pinpoints and surface graining are not shown.

PROPORTIONS



CLARITY CHARACTERISTICS



KEY TO SYMBOLS*

- Crystal
- ⊗ Cloud
- ∖ Needle

* Red symbols denote internal characteristics (inclusions). Green or black symbols denote external characteristics (blemishes). Diagram is an approximate representation of the diamond, and symbols shown indicate type, position, and approximate size of clarity characteristics. All clarity characteristics may not be shown. Details of finish are not shown.

GRADING SCALES

GIA COLOR SCALE		GIA CLARITY SCALE		
COLOURLESS	D	VERY VERY SLIGHTLY INCLUDED	FLAWLESS	
	E		INTERNALLY FLAWLESS	
	F		VVS ₁	
NEAR COLOURLESS	G		VVS ₂	
	H		VERY SLIGHTLY INCLUDED	VS ₁
	I			VS ₂
J	SLIGHTLY INCLUDED			SI ₁
FAINT			K	SI ₂
			L	INCLUDED
	M		I ₂	
N	I ₃			
VERY LIGHT	O			
	P			
	Q			
LIGHT	R			
	S			
	T			
	U			
	V			
	W			
	X			
Y				
Z				



reportcheck.gia.edu



The results documented in this report refer only to the diamond described, and were obtained using the techniques and equipment available to GIA at the time of examination. This report is not a guarantee or valuation. For additional information and important limitations and disclaimers, please see GIA.edu/terms or call +1 800 421 7250 or +1 760 603 4500. ©2022 Gemological Institute of America, Inc.

 THE SECURITY FEATURES IN THIS DOCUMENT, INCLUDING THE HOLOGRAM, SECURITY SCREEN AND MICROPRINT LINES, IN ADDITION TO THOSE NOT LISTED, EXCEED DOCUMENT SECURITY INDUSTRY GUIDELINES.