



**ELECTRONIC COPY**

## DIAMOND REPORT

December 4, 2024	
IGI Report Number	642467910
Description	NATURAL DIAMOND
Shape and Cutting Style	ROUND BRILLIANT
Measurements	6.93 - 7.00 X 4.35 MM

## GRADING RESULTS

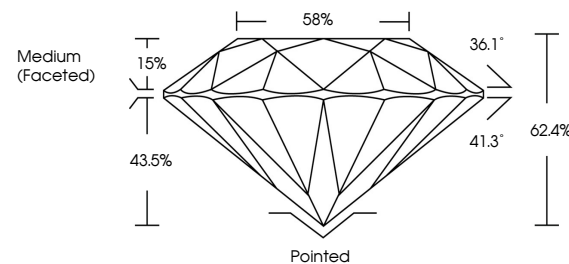
Carat Weight	1.30 CARAT
Color Grade	I
Clarity Grade	SI 1
Cut Grade	EXCELLENT

### ADDITIONAL GRADING INFORMATION

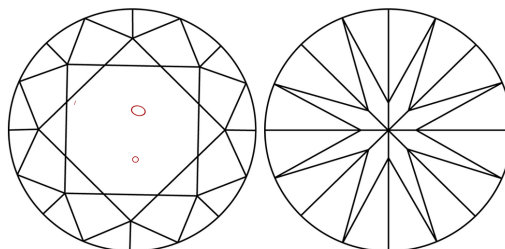
Polish	EXCELLENT
Symmetry	EXCELLENT
Fluorescence	VERY SLIGHT
Inscription(s)	 642467910
Comments: IDEAL CUT ROUND BRILLIANT	

642467910  
Report verification at [igi.org](http://igi.org)

## PROPORTIONS

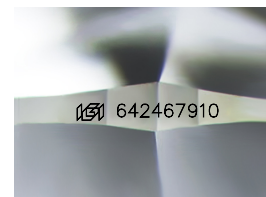


## CLARITY CHARACTERISTICS



### KEY TO SYMBOLS

Red symbols indicate internal characteristics.  
Green symbols indicate external characteristics.



Sample Image Used

**COLOR**

D - F	G - J	K - M	N - R	S - Z	FANCY
Colorless	Near Colorless	Slightly Tinted	Very Light Color	Light Color	

## CLARITY

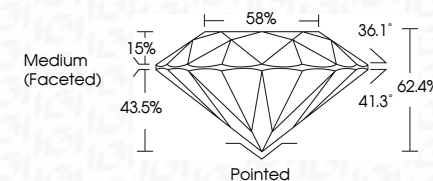
IF	VS <sup>1-2</sup>	VS <sup>1-2</sup>	SI <sup>1-2</sup>	I <sup>1-3</sup>
Internally Flawless	Very Very Slightly Included	Very Slightly Included	Slightly Included	Included



December 4, 2024	
IGI Report Number	642467910
Description	NATURAL DIAMOND
Shape and Cutting Style	ROUND BRILLIANT
Measurements	6.93 - 7.00 X 4.35 MM

## GRADING RESULTS

Carat Weight	1.30 CARAT
Color Grade	I
Clarity Grade	SI 1
Cut Grade	EXCELLENT



### ADDITIONAL GRADING INFORMATION

Polish	EXCELLENT
Symmetry	EXCELLENT
Fluorescence	VERY SLIGHT
Inscription(s)	(G) 642467910
Comments: IDEAL CUT ROUND BRILLIANT	



© IGI 2020, International Gemological Institute

FD - 10 20

**www.igi.org**



THIS DOCUMENT WAS PRODUCED WITH THE FOLLOWING SECURITY MEASURES: SPECIAL DOCUMENT PAPER, INK SCREENS, WATERMARK, BACKGROUND DESIGNS, HOLOGRAM AND OTHER SECURITY FEATURES NOT LISTED AND DO EXCEED DOCUMENT SECURITY INDUSTRY GUIDELINE

December 4, 2024  
IGI Report No 642467910  
ROUND BRILLIANT

6.93 - 7.00 X 4.35 MM	1.30 CARAT	
Carat Weight		
Color Grade	I	
Clarity Grade	S1	
Cut Grade	EXCELLENT	
Depth	62.4%	
Table	58%	
Girdle	Medium (Excellent)	

	Pointed
Culet	EXCELLENT
Polish	EXCELLENT
Symmetry	VERY SLIGHT
Fluorescence	459.4/474.5/510

**Comments:**  
IDEAL CUT ROUND BRILLIANT