



# INTERNATIONAL GEMOLOGICAL INSTITUTE

ELECTRONIC COPY

642462854

## DIAMOND REPORT

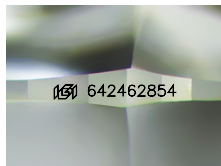
August 1, 2024  
IGI Report Number **642462854**  
Description **NATURAL DIAMOND**  
Shape and Cutting Style **ROUND BRILLIANT**  
Measurements **4.83 - 4.87 X 3.01 MM**

## GRADING RESULTS

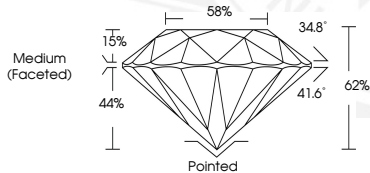
Carat Weight **0.43 CARAT**  
Color Grade **H**  
Clarity Grade **VVS 1**  
Cut Grade **EXCELLENT**

## ADDITIONAL GRADING INFORMATION

Polish **EXCELLENT**  
Symmetry **EXCELLENT**  
Fluorescence **SLIGHT**  
Identification Features **FEATHER**  
Inscription(s) **(IGI) 642462854**  
Comments: IDEAL CUT ROUND BRILLIANT



Sample Image Used



August 1, 2024  
IGI Report Number **642462854**  
ROUND BRILLIANT  
NATURAL DIAMOND  
4.83 - 4.87 X 3.01 MM  
Carat Weight **0.43 CARAT**  
Color Grade **H**  
Clarity Grade **VVS 1**  
Cut Grade **EXCELLENT**  
Polish **EXCELLENT**  
Symmetry **EXCELLENT**  
Fluorescence **SLIGHT**  
Inscription(s) **(IGI) 642462854**  
Comments: IDEAL CUT ROUND BRILLIANT



August 1, 2024  
IGI Report Number **642462854**  
ROUND BRILLIANT  
NATURAL DIAMOND  
4.83 - 4.87 X 3.01 MM  
Carat Weight **0.43 CARAT**  
Color Grade **H**  
Clarity Grade **VVS 1**  
Cut Grade **EXCELLENT**  
Polish **EXCELLENT**  
Symmetry **EXCELLENT**  
Fluorescence **SLIGHT**  
Inscription(s) **(IGI) 642462854**  
Comments: IDEAL CUT ROUND BRILLIANT



THIS DOCUMENT WAS PRODUCED WITH THE FOLLOWING SECURITY MEASURES: SPECIAL DOCUMENT PAPER, INK SCREENS, WATERMARK, BACKGROUND DESIGNS, HOLOGRAM AND OTHER SECURITY FEATURES NOT LISTED AND DO EXCEED DOCUMENT SECURITY INDUSTRY GUIDELINES.

For terms & conditions and to verify this report, please visit [www.igi.org](http://www.igi.org)