



ELECTRONIC COPY

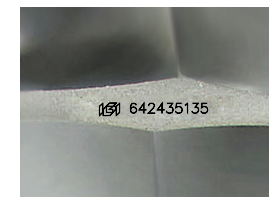
642435135
Report verification at igi.org



July 19, 2024
IGI Report Number **642435135**
Description **NATURAL DIAMOND**
Shape and Cutting Style **ROUND BRILLIANT**
Measurements **8.06 - 8.13 X 4.90 MM**

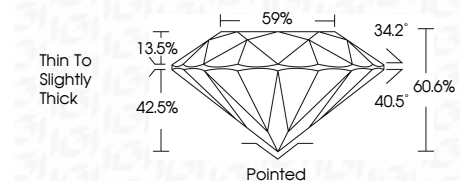
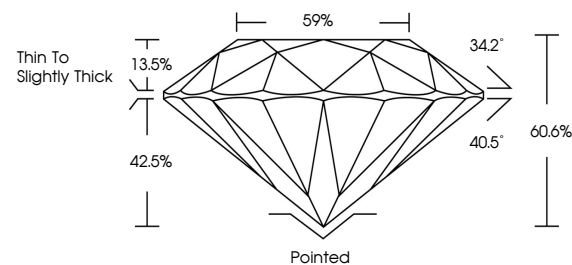
GRADING RESULTS

Carat Weight **2.00 CARATS**
Color Grade **K**
Clarity Grade **VS 2**
Cut Grade **EXCELLENT**

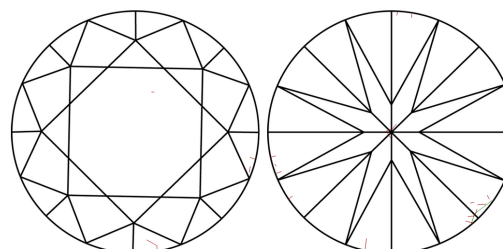


Sample Image Used

PROPORTIONS



CLARITY CHARACTERISTICS



KEY TO SYMBOLS

Red symbols indicate internal characteristics.
Green symbols indicate external characteristics.

COLOR

| D - F | G - J | K - M | N - R | S - Z | FANCY |
|-----------|----------------|-----------------|------------------|-------------|-------|
| Colorless | Near Colorless | Slightly Tinted | Very Light Color | Light Color | |

CLARITY

| IF | VS ¹⁻² | VS ¹⁻² | SI ¹⁻² | I ¹⁻³ |
|---------------------|-----------------------------|------------------------|-------------------|------------------|
| Internally Flawless | Very Very Slightly Included | Very Slightly Included | Slightly Included | Included |



ADDITIONAL GRADING INFORMATION

Polish **EXCELLENT**
Symmetry **EXCELLENT**
Fluorescence **NONE**
Inscription(s) **IGI 642435135**



IGI

July 19, 2024
IGI Report No. 642435135
ROUND BRILLIANT
8.06 - 8.13 X 4.90 MM
2.00 CARATS
K
VS 2
EXCELLENT
60.6%
59%
Thin To Slightly Thick
Pointed
EXCELLENT
EXCELLENT
NONE
IGI 642435135