



ELECTRONIC COPY

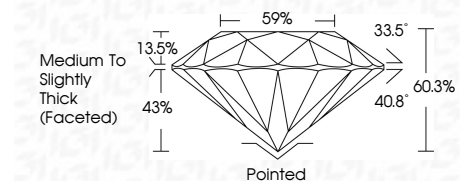
639454316
Report verification at igi.org



January 15, 2025
IGI Report Number **639454316**
Description **NATURAL DIAMOND**
Shape and Cutting Style **ROUND BRILLIANT**
Measurements **7.82 - 7.87 X 4.73 MM**

GRADING RESULTS

Carat Weight **1.80 CARAT**
Color Grade **J**
Clarity Grade **VVS 2**
Cut Grade **EXCELLENT**

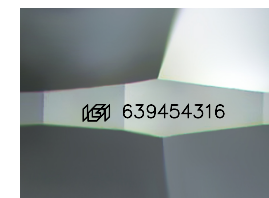


ADDITIONAL GRADING INFORMATION

Polish **EXCELLENT**
Symmetry **EXCELLENT**
Fluorescence **NONE**
Inscription(s) **IGI 639454316**
Comments: IDEAL CUT ROUND BRILLIANT

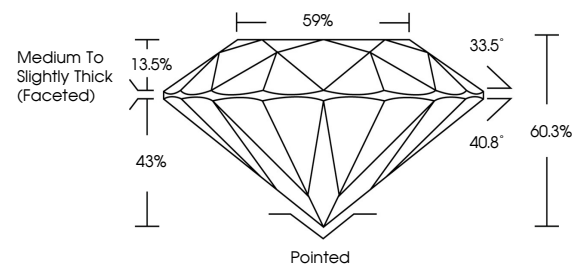


January 15, 2025
IGI Report No 639454316
ROUND BRILLIANT
7.82 - 7.87 X 4.73 MM
1.80 CARAT
J
Color Grade
EXCELLENT
VVS 2
Clarity Grade
60.3%
59%
Depth
Table
Girdle
Medium To Slightly Thick (Faceted)
Culet
Pointed
Polish
EXCELLENT
Symmetry
EXCELLENT
Fluorescence
NONE
Inscription(s)
IGI 639454316
Comments:
IDEAL CUT ROUND BRILLIANT

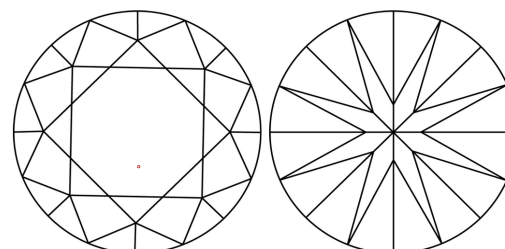


Sample Image Used

PROPORTIONS



CLARITY CHARACTERISTICS



KEY TO SYMBOLS

Red symbols indicate internal characteristics.
Green symbols indicate external characteristics.

COLOR

D - F	G - J	K - M	N - R	S - Z	FANCY
Colorless	Near Colorless	Slightly Tinted	Very Light Color	Light Color	

CLARITY

IF	VVS ¹⁻²	VS ¹⁻²	SI ¹⁻²	I ¹⁻³
Internally Flawless	Very Very Slightly Included	Very Slightly Included	Slightly Included	Included

