



ELECTRONIC COPY

639424764
Report verification at igi.org

DIAMOND REPORT

June 24, 2024
IGI Report Number **639424764**
Description **NATURAL DIAMOND**
Shape and Cutting Style **ROUND BRILLIANT**
Measurements **6.79 - 6.85 X 4.20 MM**

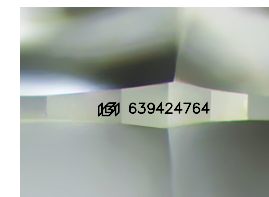
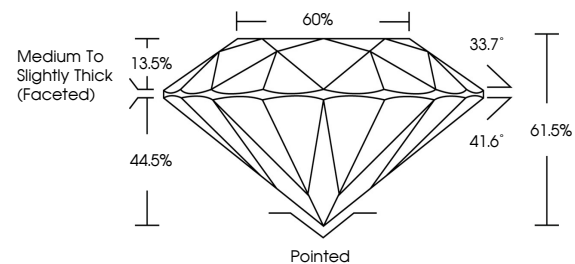
GRADING RESULTS

Carat Weight **1.20 CARAT**
Color Grade **L**
Clarity Grade **SI 2**
Cut Grade **EXCELLENT**

ADDITIONAL GRADING INFORMATION

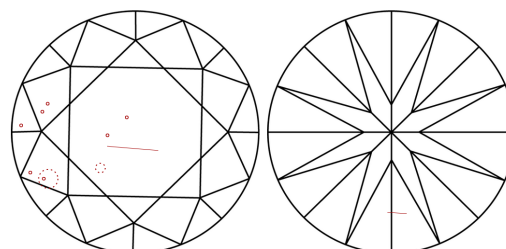
Polish **EXCELLENT**
Symmetry **EXCELLENT**
Fluorescence **NONE**
Inscription(s) **639424764**

PROPORTIONS



Sample Image Used

CLARITY CHARACTERISTICS



KEY TO SYMBOLS

Red symbols indicate internal characteristics.
Green symbols indicate external characteristics.

COLOR

D - F	G - J	K - M	N - R	S - Z	FANCY
Colorless	Near Colorless	Slightly Tinted	Very Light Color	Light Color	

CLARITY

IF	VS ¹⁻²	VS ¹⁻²	SI ¹⁻²	I ¹⁻³
Internally Flawless	Very Very Slightly Included	Very Slightly Included	Slightly Included	Included



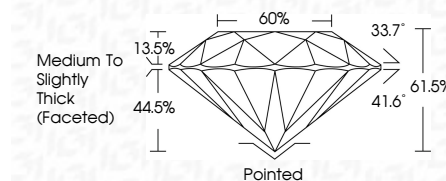
June 24, 2024
IGI Report Number **639424764**
Description **NATURAL DIAMOND**
Shape and Cutting Style **ROUND BRILLIANT**
Measurements **6.79 - 6.85 X 4.20 MM**

GRADING RESULTS

Carat Weight **1.20 CARAT**
Color Grade **L**
Clarity Grade **SI 2**
Cut Grade **EXCELLENT**

ADDITIONAL GRADING INFORMATION

Polish **EXCELLENT**
Symmetry **EXCELLENT**
Fluorescence **NONE**
Inscription(s) **639424764**



IGI

June 24, 2024
IGI Report No. **639424764**
ROUND BRILLIANT
6.79 - 6.85 X 4.20 MM
Carat Weight **1.20 CARAT**
Color Grade **L**
Clarity Grade **SI 2**
Cut Grade **EXCELLENT**
Depth **61.6%**
Table **60%**
Girdle **Medium To Slightly Thick (Faceted)**
Culet **Pointed**
Polish **EXCELLENT**
Symmetry **EXCELLENT**
Fluorescence **NONE**
Inscription(s) **639424764**