



**ELECTRONIC COPY**

638475745  
Report verification at [igi.org](http://igi.org)



July 10, 2024  
IGI Report Number **638475745**  
Description **NATURAL DIAMOND**  
Shape and Cutting Style **ROUND BRILLIANT**  
Measurements **11.55 - 11.59 X 7.25 MM**

**GRADING RESULTS**

Carat Weight **6.03 CARATS**  
Color Grade **K**  
Clarity Grade **SI 1**  
Cut Grade **EXCELLENT**

**DIAMOND REPORT**

July 10, 2024  
IGI Report Number **638475745**  
Description **NATURAL DIAMOND**  
Shape and Cutting Style **ROUND BRILLIANT**  
Measurements **11.55 - 11.59 X 7.25 MM**

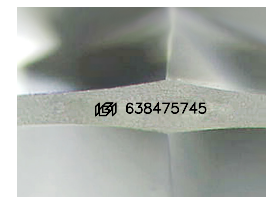
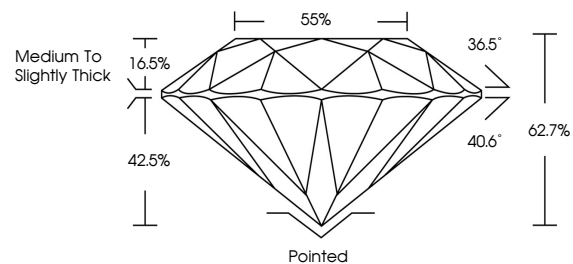
**GRADING RESULTS**

Carat Weight **6.03 CARATS**  
Color Grade **K**  
Clarity Grade **SI 1**  
Cut Grade **EXCELLENT**

**ADDITIONAL GRADING INFORMATION**

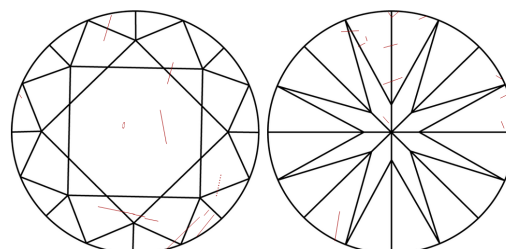
Polish **EXCELLENT**  
Symmetry **EXCELLENT**  
Fluorescence **NONE**  
Inscription(s) **638475745**

**PROPORTIONS**



Sample Image Used

**CLARITY CHARACTERISTICS**



**KEY TO SYMBOLS**

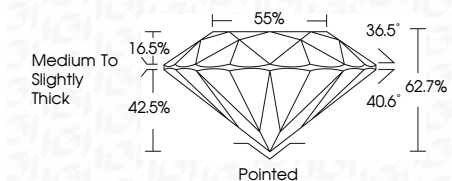
Red symbols indicate internal characteristics.  
Green symbols indicate external characteristics.

**COLOR**

D - F	G - J	K - M	N - R	S - Z	FANCY
Colorless	Near Colorless	Slightly Tinted	Very Light Color	Light Color	

**CLARITY**

IF	VS <sup>1-2</sup>	VS <sup>1-2</sup>	SI <sup>1-2</sup>	I <sup>1-3</sup>
Internally Flawless	Very Very Slightly Included	Very Slightly Included	Slightly Included	Included



**ADDITIONAL GRADING INFORMATION**

Polish **EXCELLENT**  
Symmetry **EXCELLENT**  
Fluorescence **NONE**  
Inscription(s) **638475745**



**IGI**

July 10, 2024  
IGI Report No. **638475745**  
**ROUND BRILLIANT**  
**11.55 - 11.59 X 7.25 MM**  
Carat Weight **6.03 CARATS**  
Color Grade **K**  
Clarity Grade **SI 1**  
Depth **EXCELLENT**  
Table **62.7%**  
Girdle **EXCELLENT**  
Culet **Medium to Slightly Thick**  
Polish **EXCELLENT**  
Symmetry **EXCELLENT**  
Fluorescence **NONE**  
Inscription(s) **638475745**