



**ELECTRONIC COPY**

638473157  
Report verification at [igi.org](http://igi.org)



July 8, 2024  
IGI Report Number **638473157**  
Description **NATURAL DIAMOND**  
Shape and Cutting Style **ROUND BRILLIANT**  
Measurements **8.02 - 8.04 X 5.08 MM**

**GRADING RESULTS**

Carat Weight **2.05 CARATS**  
Color Grade **J**  
Clarity Grade **SI 1**  
Cut Grade **EXCELLENT**

**DIAMOND REPORT**

July 8, 2024  
IGI Report Number **638473157**  
Description **NATURAL DIAMOND**  
Shape and Cutting Style **ROUND BRILLIANT**  
Measurements **8.02 - 8.04 X 5.08 MM**

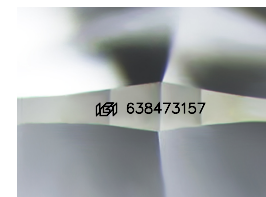
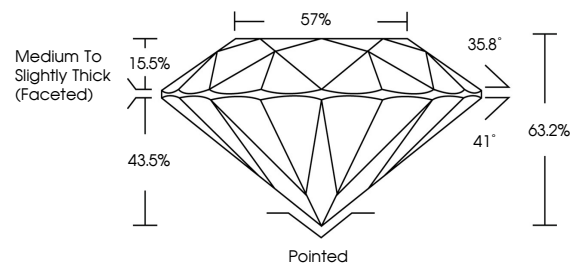
**GRADING RESULTS**

Carat Weight **2.05 CARATS**  
Color Grade **J**  
Clarity Grade **SI 1**  
Cut Grade **EXCELLENT**

**ADDITIONAL GRADING INFORMATION**

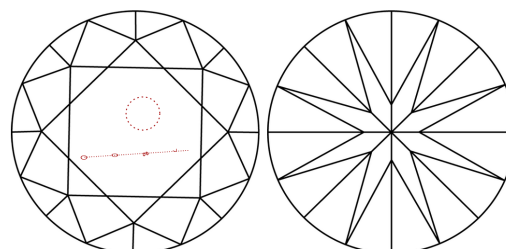
Polish **EXCELLENT**  
Symmetry **EXCELLENT**  
Fluorescence **STRONG**  
Inscription(s) **638473157**

**PROPORTIONS**



Sample Image Used

**CLARITY CHARACTERISTICS**



**KEY TO SYMBOLS**

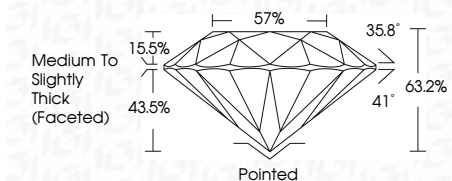
Red symbols indicate internal characteristics.  
Green symbols indicate external characteristics.

**COLOR**

D - F	G - J	K - M	N - R	S - Z	FANCY
Colorless	Near Colorless	Slightly Tinted	Very Light Color	Light Color	

**CLARITY**

IF	VS <sup>1-2</sup>	VS <sup>1-2</sup>	SI <sup>1-2</sup>	I <sup>1-3</sup>
Internally Flawless	Very Very Slightly Included	Very Slightly Included	Slightly Included	Included



**ADDITIONAL GRADING INFORMATION**

Polish **EXCELLENT**  
Symmetry **EXCELLENT**  
Fluorescence **STRONG**  
Inscription(s) **638473157**



**IGI**

July 8, 2024  
IGI Report No. **638473157**  
**ROUND BRILLIANT**  
**8.02 - 8.04 X 5.08 MM**  
Carat Weight **2.05 CARATS**  
Color Grade **J**  
Clarity Grade **SI 1**  
Cut Grade **EXCELLENT**  
Depth **63.2%**  
Table **57%**  
Girdle **Medium To Slightly Thick (Faceted)**  
Culet **Pointed**  
Polish **EXCELLENT**  
Symmetry **EXCELLENT**  
Fluorescence **STRONG**  
Inscription(s) **638473157**