



ELECTRONIC COPY

DIAMOND REPORT

August 5, 2024	
IGI Report Number	636450297
Description	NATURAL DIAMOND
Shape and Cutting Style	ROUND BRILLIANT
Measurements	7.35 - 7.38 X 4.56 MM

GRADING RESULTS

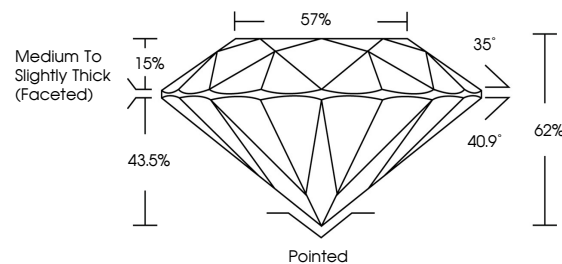
Carat Weight	1.52 CARAT
Color Grade	L
Clarity Grade	VS 2
Cut Grade	EXCELLENT

ADDITIONAL GRADING INFORMATION

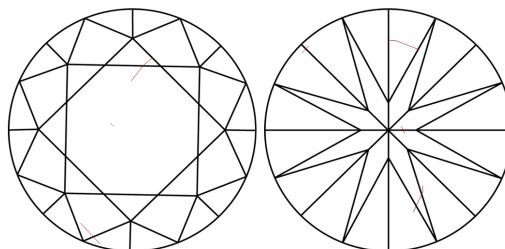
Polish	EXCELLENT
Symmetry	EXCELLENT
Fluorescence	NONE
Inscription(s)	 636450297
Comments: IDEAL CUT ROUND BRILLIANT	

636450297
Report verification at igi.org

PROPORTIONS

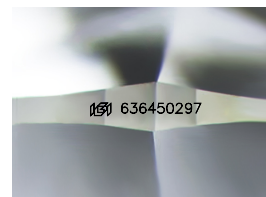


CLARITY CHARACTERISTICS



KEY TO SYMBOLS

Red symbols indicate internal characteristics.
Green symbols indicate external characteristics.



Sample Image Used

COLOR

D - F	G - J	K - M	N - R	S - Z	FANCY
Colorless	Near Colorless	Slightly Tinted	Very Light Color	Light Color	

CLARITY

IF	VVS ¹⁻²	VS ¹⁻²	SI ¹⁻²	I ¹⁻³
Internally Flawless	Very Very Slightly Included	Very Slightly Included	Slightly Included	Included



© IGI 2020, International Gemological Institute

FD - 10 20

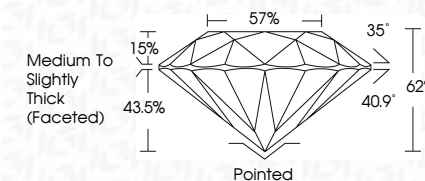
DIAMOND REPORT



August 5, 2024	
IGI Report Number	6364502977
Description	NATURAL DIAMOND
Shape and Cutting Style	ROUND BRILLIANT
Measurements	7.35 - 7.38 X 4.56 MM

GRADING RESULTS

Carat Weight	1.52 CARAT
Color Grade	L
Clarity Grade	VS 2
Cut Grade	EXCELLENT



ADDITIONAL GRADING INFORMATION

Polish	EXCELLENT
Symmetry	EXCELLENT
Fluorescence	NONE
Inscription(s)	(G) 636450297
Comments: IDEAL CUT ROUND BRILLIANT	



IG

August 5, 2024
GI Report No 636450297
ROUND BRILLIANT

3.35 - 7.38 X 4.66 MM	Color Grade	Clarity Grade	VS 2	1.52 CARAT
	Carat Weight	Cut Grade	EXCELLENT	L
	Depth	Table	62%	
	Girdle	Medium To Slightly Thick (Faceted)	57%	
	Culet	Pointed	EXCELLENT	
	Polish	Symmetry	EXCELLENT	
	Fluorescence	NONE		
	Identification (A)			

Comments: