



**ELECTRONIC COPY**

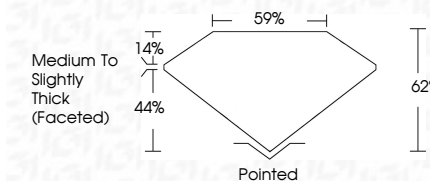
635477689  
Report verification at [igi.org](http://igi.org)



June 19, 2024  
IGI Report Number **635477689**  
Description **NATURAL DIAMOND**  
Shape and Cutting Style **OVAL BRILLIANT**  
Measurements **8.67 X 5.94 X 3.68 MM**

**GRADING RESULTS**

Carat Weight **1.21 CARAT**  
Color Grade **H**  
Clarity Grade **VVS 2**  
Cut Grade **EXCELLENT**



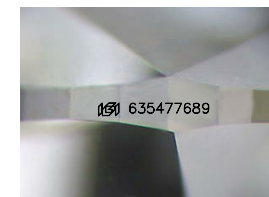
**ADDITIONAL GRADING INFORMATION**

Polish **EXCELLENT**  
Symmetry **EXCELLENT**  
Fluorescence **NONE**  
Inscription(s) **IGI 635477689**



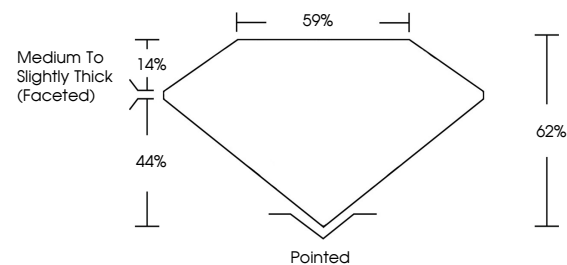
**IGI**

June 19, 2024  
IGI Report No. 635477689  
**OVAL BRILLIANT**  
8.67 X 5.94 X 3.68 MM  
1.21 CARAT  
H  
VVS 2  
EXCELLENT  
62%  
59%  
Medium To Slightly Thick (Faceted)  
Pointed  
EXCELLENT  
EXCELLENT  
NONE  
IGI 635477689

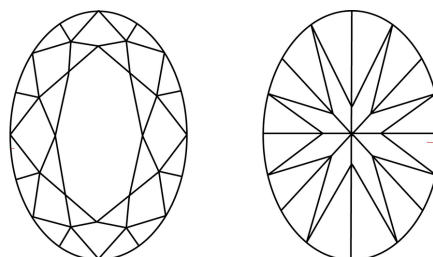


Sample Image Used

**PROPORTIONS**



**CLARITY CHARACTERISTICS**



**KEY TO SYMBOLS**

Red symbols indicate internal characteristics.  
Green symbols indicate external characteristics.

**COLOR**

D - F	G - J	K - M	N - R	S - Z	FANCY
Colorless	Near Colorless	Slightly Tinted	Very Light Color	Light Color	

**CLARITY**

IF	VS <sup>1-2</sup>	VS <sup>1-2</sup>	SI <sup>1-2</sup>	I <sup>1-3</sup>
Internally Flawless	Very Very Slightly Included	Very Slightly Included	Slightly Included	Included



June 19, 2024  
IGI Report Number **635477689**  
Description **NATURAL DIAMOND**  
Shape and Cutting Style **OVAL BRILLIANT**  
Measurements **8.67 X 5.94 X 3.68 MM**

**GRADING RESULTS**

Carat Weight **1.21 CARAT**  
Color Grade **H**  
Clarity Grade **VVS 2**  
Cut Grade **EXCELLENT**

**ADDITIONAL GRADING INFORMATION**

Polish **EXCELLENT**  
Symmetry **EXCELLENT**  
Fluorescence **NONE**  
Inscription(s) **IGI 635477689**