



ELECTRONIC COPY

635473059
Report verification at igi.org



June 6, 2024
IGI Report Number **635473059**
Description **NATURAL DIAMOND**
Shape and Cutting Style **EMERALD CUT**
Measurements **6.79 X 4.68 X 3.18 MM**
GRADING RESULTS
Carat Weight **1.01 CARAT**
Color Grade **I**
Clarity Grade **VVS 1**
Cut Grade **EXCELLENT**

DIAMOND REPORT

June 6, 2024
IGI Report Number **635473059**
Description **NATURAL DIAMOND**
Shape and Cutting Style **EMERALD CUT**
Measurements **6.79 X 4.68 X 3.18 MM**

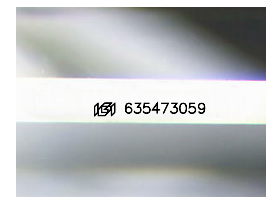
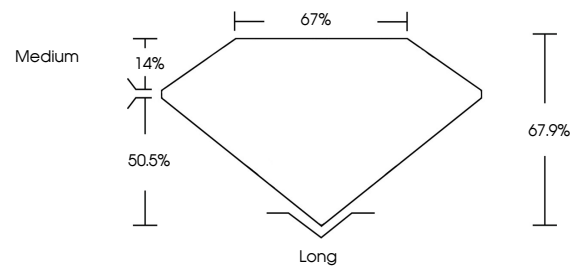
GRADING RESULTS

Carat Weight **1.01 CARAT**
Color Grade **I**
Clarity Grade **VVS 1**
Cut Grade **EXCELLENT**

ADDITIONAL GRADING INFORMATION

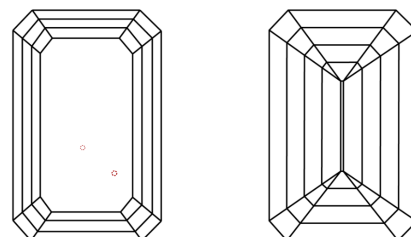
Polish **EXCELLENT**
Symmetry **EXCELLENT**
Fluorescence **NONE**
Inscription(s) **635473059**

PROPORTIONS



Sample Image Used

CLARITY CHARACTERISTICS



KEY TO SYMBOLS

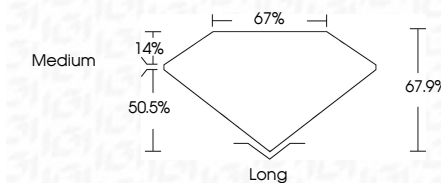
Red symbols indicate internal characteristics.
Green symbols indicate external characteristics.

COLOR

D - F	G - J	K - M	N - R	S - Z	FANCY
Colorless	Near Colorless	Slightly Tinted	Very Light Color	Light Color	

CLARITY

IF	VVS ¹⁻²	VS ¹⁻²	SI ¹⁻²	I ¹⁻³
Internally Flawless	Very Very Slightly Included	Very Slightly Included	Slightly Included	Included



ADDITIONAL GRADING INFORMATION

Polish **EXCELLENT**
Symmetry **EXCELLENT**
Fluorescence **NONE**
Inscription(s) **635473059**



IGI



June 6, 2024
IGI Report No **635473059**
EMERALD CUT
Carat Weight **1.01 CARAT**
Color Grade **I**
Clarity Grade **VVS 1**
Depth **50.5%**
Table **14%**
Girdle **67%**
Medium
Long **67%**
Polish **EXCELLENT**
Symmetry **EXCELLENT**
Fluorescence **NONE**
Inscription(s) **635473059**