



ELECTRONIC COPY

632487295
Report verification at igi.org



May 25, 2024
IGI Report Number **632487295**
Description **NATURAL DIAMOND**
Shape and Cutting Style **EMERALD CUT**
Measurements **7.56 X 4.76 X 3.29 MM**
GRADING RESULTS
Carat Weight **1.21 CARAT**
Color Grade **K**
Clarity Grade **VS 1**
Cut Grade **VERY GOOD**

DIAMOND REPORT

May 25, 2024
IGI Report Number **632487295**
Description **NATURAL DIAMOND**
Shape and Cutting Style **EMERALD CUT**
Measurements **7.56 X 4.76 X 3.29 MM**

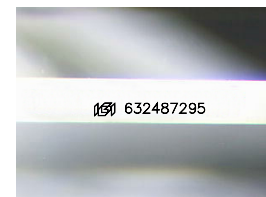
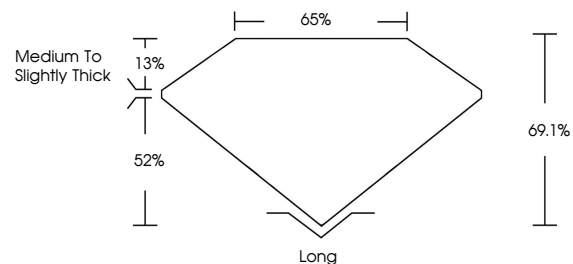
GRADING RESULTS

Carat Weight **1.21 CARAT**
Color Grade **K**
Clarity Grade **VS 1**
Cut Grade **VERY GOOD**

ADDITIONAL GRADING INFORMATION

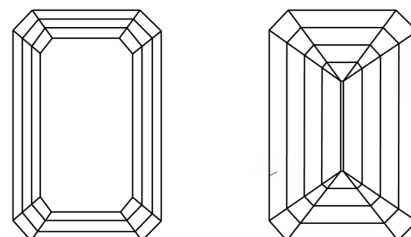
Polish **EXCELLENT**
Symmetry **EXCELLENT**
Fluorescence **VERY SLIGHT**
Inscription(s) **632487295**

PROPORTIONS



Sample Image Used

CLARITY CHARACTERISTICS



KEY TO SYMBOLS

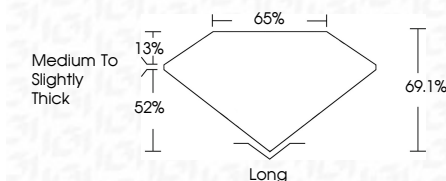
Red symbols indicate internal characteristics.
Green symbols indicate external characteristics.

COLOR

D - F	G - J	K - M	N - R	S - Z	FANCY
Colorless	Near Colorless	Slightly Tinted	Very Light Color	Light Color	

CLARITY

IF	VVS ¹⁻²	VS ¹⁻²	SI ¹⁻²	I ¹⁻³
Internally Flawless	Very Very Slightly Included	Very Slightly Included	Slightly Included	Included



ADDITIONAL GRADING INFORMATION

Polish **EXCELLENT**
Symmetry **EXCELLENT**
Fluorescence **VERY SLIGHT**
Inscription(s) **632487295**



IGI

May 25, 2024
IGI Report No **632487295**
EMERALD CUT
7.56 X 4.76 X 3.29 MM
1.21 CARAT
K
Color Grade **VERY GOOD**
Clarity Grade **VS 1**
Depth **61%**
Table **65%**
Girdle **Medium To Slightly Thick**
Culet **None**
Polish **EXCELLENT**
Symmetry **EXCELLENT**
Fluorescence **VERY SLIGHT**
Inscription(s) **632487295**