



**ELECTRONIC COPY**

632408139  
Report verification at [igi.org](http://igi.org)

**DIAMOND REPORT**

May 9, 2024  
IGI Report Number **632408139**  
Description **NATURAL DIAMOND**  
Shape and Cutting Style **ROUND BRILLIANT**  
Measurements **8.69 - 8.75 X 5.26 MM**

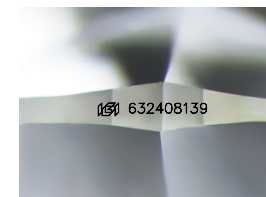
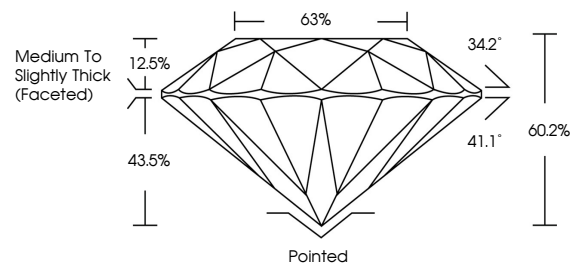
**GRADING RESULTS**

Carat Weight **2.50 CARATS**  
Color Grade **L**  
Clarity Grade **SI 1**  
Cut Grade **EXCELLENT**

**ADDITIONAL GRADING INFORMATION**

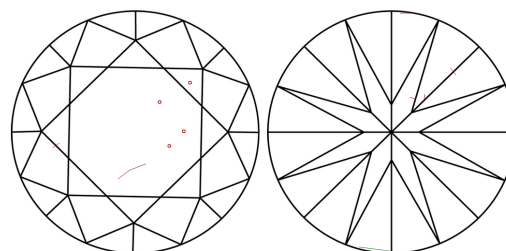
Polish **EXCELLENT**  
Symmetry **EXCELLENT**  
Fluorescence **NONE**  
Inscription(s) **632408139**

**PROPORTIONS**



Sample Image Used

**CLARITY CHARACTERISTICS**



**KEY TO SYMBOLS**

Red symbols indicate internal characteristics.  
Green symbols indicate external characteristics.

**COLOR**

D - F	G - J	K - M	N - R	S - Z	FANCY
Colorless	Near Colorless	Slightly Tinted	Very Light Color	Light Color	

**CLARITY**

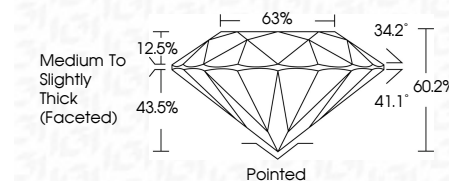
IF	VVS <sup>1-2</sup>	VS <sup>1-2</sup>	SI <sup>1-2</sup>	I <sup>1-3</sup>
Internally Flawless	Very Very Slightly Included	Very Slightly Included	Slightly Included	Included



May 9, 2024  
IGI Report Number **632408139**  
Description **NATURAL DIAMOND**  
Shape and Cutting Style **ROUND BRILLIANT**  
Measurements **8.69 - 8.75 X 5.26 MM**

**GRADING RESULTS**

Carat Weight **2.50 CARATS**  
Color Grade **L**  
Clarity Grade **SI 1**  
Cut Grade **EXCELLENT**



**ADDITIONAL GRADING INFORMATION**

Polish **EXCELLENT**  
Symmetry **EXCELLENT**  
Fluorescence **NONE**  
Inscription(s) **632408139**



**IGI**



May 9, 2024  
IGI Report No 632408139  
**ROUND BRILLIANT**  
8.69 - 8.75 X 5.26 MM  
2.50 CARATS L  
Color Grade EXCELLENT  
Clarity Grade SI 1  
Depth 60.2%  
Table 63%  
Girdle Medium To Slightly Thick (Faceted)  
Culet Pointed  
Polish EXCELLENT  
Symmetry EXCELLENT  
Fluorescence NONE  
Inscriptions(s) 632408139