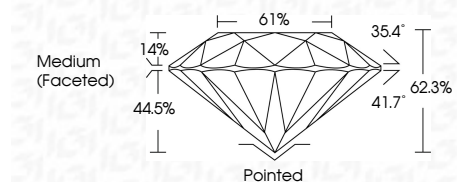




May 28, 2024
IGI Report Number **629459848**
Description **NATURAL DIAMOND**
Shape and Cutting Style **ROUND BRILLIANT**
Measurements **15.85 - 15.99 X 9.91 MM**

GRADING RESULTS
Carat Weight **15.59 CARATS**
Color Grade **K**
Clarity Grade **VS 2**
Cut Grade **EXCELLENT**



ADDITIONAL GRADING INFORMATION
Polish **EXCELLENT**
Symmetry **EXCELLENT**
Fluorescence **NONE**
Inscription(s) **IGI 629459848**



May 28, 2024
IGI Report No. 629459848
ROUND BRILLIANT
15.85 - 15.99 X 9.91 MM
15.59 CARATS
K
VS 2
EXCELLENT
62.3%
61%
Medium (Faceted)
Pointed
EXCELLENT
EXCELLENT
NONE
IGI 629459848

ELECTRONIC COPY

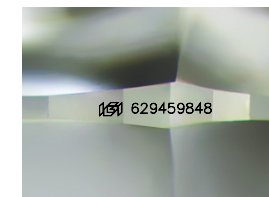
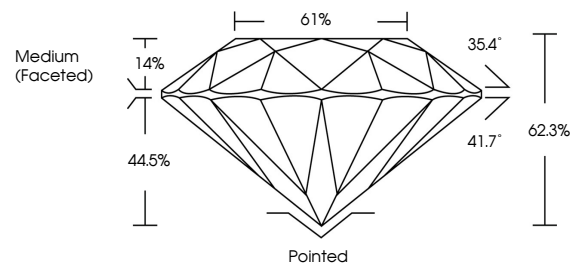
DIAMOND REPORT

May 28, 2024
IGI Report Number **629459848**
Description **NATURAL DIAMOND**
Shape and Cutting Style **ROUND BRILLIANT**
Measurements **15.85 - 15.99 X 9.91 MM**

GRADING RESULTS
Carat Weight **15.59 CARATS**
Color Grade **K**
Clarity Grade **VS 2**
Cut Grade **EXCELLENT**

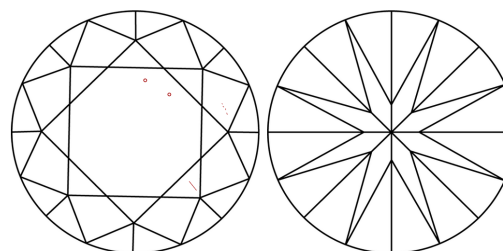
ADDITIONAL GRADING INFORMATION
Polish **EXCELLENT**
Symmetry **EXCELLENT**
Fluorescence **NONE**
Inscription(s) **IGI 629459848**

PROPORTIONS



Sample Image Used

CLARITY CHARACTERISTICS



KEY TO SYMBOLS

Red symbols indicate internal characteristics.
Green symbols indicate external characteristics.

COLOR

D - F	G - J	K - M	N - R	S - Z	FANCY
Colorless	Near Colorless	Slightly Tinted	Very Light Color	Light Color	

CLARITY

IF	VVS ¹⁻²	VS ¹⁻²	SI ¹⁻²	I ¹⁻³
Internally Flawless	Very Very Slightly Included	Very Slightly Included	Slightly Included	Included

