



ELECTRONIC COPY

629452484
Report verification at igi.org



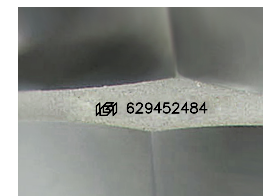
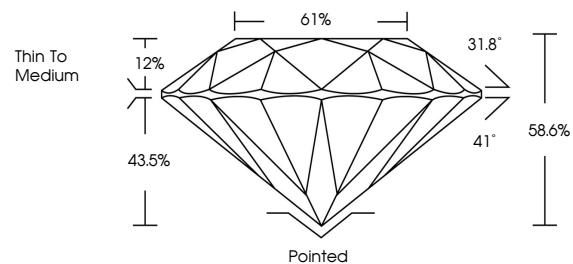
May 3, 2024
IGI Report Number **629452484**
Description **NATURAL DIAMOND**
Shape and Cutting Style **ROUND BRILLIANT**
Measurements **10.24 - 10.28 X 6.01 MM**
GRADING RESULTS
Carat Weight **3.80 CARATS**
Color Grade **J**
Clarity Grade **INTERNALLY FLAWLESS**
Cut Grade **EXCELLENT**

May 3, 2024
IGI Report Number **629452484**
Description **NATURAL DIAMOND**
Shape and Cutting Style **ROUND BRILLIANT**
Measurements **10.24 - 10.28 X 6.01 MM**

GRADING RESULTS
Carat Weight **3.80 CARATS**
Color Grade **J**
Clarity Grade **INTERNALLY FLAWLESS**
Cut Grade **EXCELLENT**

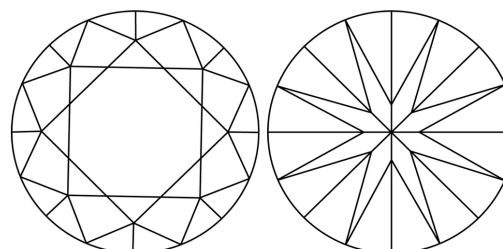
ADDITIONAL GRADING INFORMATION
Polish **EXCELLENT**
Symmetry **EXCELLENT**
Fluorescence **NONE**
Inscription(s) **629452484**

PROPORTIONS



Sample Image Used

CLARITY CHARACTERISTICS



KEY TO SYMBOLS

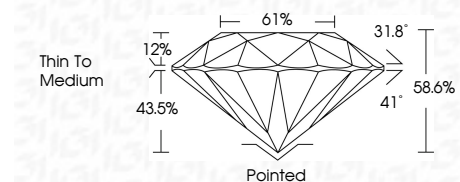
Red symbols indicate internal characteristics.
Green symbols indicate external characteristics.

COLOR

D - F	G - J	K - M	N - R	S - Z	FANCY
Colorless	Near Colorless	Slightly Tinted	Very Light Color	Light Color	

CLARITY

IF	VS ¹⁻²	VS ¹⁻²	SI ¹⁻²	I ¹⁻³
Internally Flawless	Very Very Slightly Included	Very Slightly Included	Slightly Included	Included



ADDITIONAL GRADING INFORMATION

Polish **EXCELLENT**
Symmetry **EXCELLENT**
Fluorescence **NONE**
Inscription(s) **629452484**



IGI

May 3, 2024
IGI Report No. **629452484**
ROUND BRILLIANT
10.24 - 10.28 X 6.01 MM
Carat Weight **3.80 CARATS**
Color Grade **J**
Clarity Grade **IF**
Depth **EXCELLENT**
Table **86.0%**
Girdle **61%**
Thin To Medium
Culet **Pointed**
Polish **EXCELLENT**
Symmetry **EXCELLENT**
Fluorescence **NONE**
Inscription(s) **629452484**