



**ELECTRONIC COPY**

## DIAMOND REPORT

April 1, 2025	
IGI Report Number	628465722
Description	NATURAL DIAMOND
Shape and Cutting Style	ROUND BRILLIANT
Measurements	7.29 - 7.36 X 4.49 MM

## GRADING RESULTS

Carat Weight	1.50 CARAT
Color Grade	E
Clarity Grade	SI 2
Cut Grade	EXCELLENT

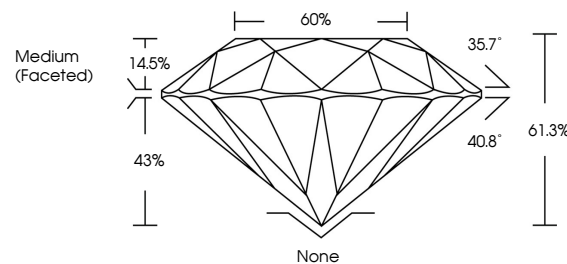
### ADDITIONAL GRADING INFORMATION

Polish	EXCELLENT
Symmetry	EXCELLENT
Fluorescence	NONE
Inscription(s)	131 628465722

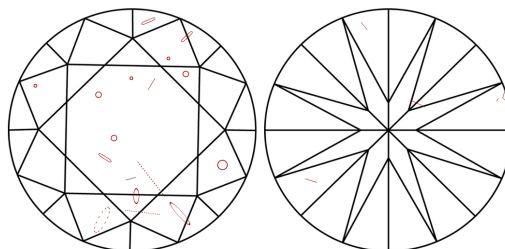
Comments: IDEAL CUT ROUND BRILLIANT  
Presence of internal laser.

628465722  
Report verification at [igi.org](http://igi.org)

## PROPORTIONS

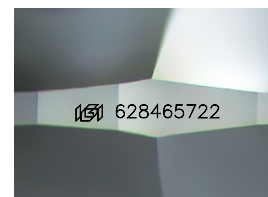


## CLARITY CHARACTERISTICS



## KEY TO SYMBOLS

Red symbols indicate internal characteristics.  
Green symbols indicate external characteristics.



Sample Image Used

**COLOR**

D - F	G - J	K - M	N - R	S - Z	FANCY
Colorless	Near Colorless	Slightly Tinted	Very Light Color	Light Color	

## CLARITY

IF	VVS <sup>1-2</sup>	VS <sup>1-2</sup>	SI <sup>1-2</sup>	I <sup>1-3</sup>
Internally Flawless	Very Very Slightly Included	Very Slightly Included	Slightly Included	Included

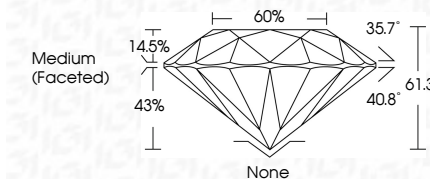
## DIAMOND REPORT



April 1, 2025	
IGI Report Number	628465722
Description	NATURAL DIAMOND
Shape and Cutting Style	ROUND BRILLIANT
Measurements	7.29 - 7.36 X 4.49 MM

## GRADING RESULTS

Carat Weight	1.50 CARAT
Color Grade	E
Clarity Grade	S12
Cut Grade	EXCELLENT



### ADDITIONAL GRADING INFORMATION

Polish	EXCELLENT
Symmetry	EXCELLENT
Fluorescence	NONE
Inscription(s)	<del>1651</del> 628465722
Comments: IDEAL CUT ROUND BRILLIANT	
Presence of internal laser.	



© IGI 2020, International Gemological Institute

FD - 10 20

**www.igi.org**



THIS DOCUMENT WAS PRODUCED WITH THE FOLLOWING SECURITY MEASURES: SPECIAL DOCUMENT PAPER, INK SCREENS, WATERMARK, BACKGROUND DESIGNS, HOLOGRAM AND OTHER SECURITY FEATURES NOT LISTED AND DO EXCEED DOCUMENT SECURITY INDUSTRY GUIDELINES

April 1, 2025  
IGI Report No 628465722  
ROUND BRILLIANT

7.29 - 7.36 X 4.49 MM	Carat Weight	1.50 CARAT
	Color Grade	E
	Clarity Grade	S12
	Cut Grade	EXCELLENT
	Depth	61.9%
	Table	60%
	Girdle	Medium (Faceted)
	Culet	None
	Polish	EXCELLENT
	Symmetry	EXCELLENT
	Fluorescence	NONE

**Comments:**  
IDEAL CUT ROUND BRILLIANT

**Comments:**  
IDEAL CUT ROUND BRILLIANT