



**ELECTRONIC COPY**

## DIAMOND REPORT

May 14, 2024	
IGI Report Number	627493601
Description	NATURAL DIAMOND
Shape and Cutting Style	ROUND BRILLIANT
Measurements	6.95 - 6.99 X 4.13 MM

## GRADING RESULTS

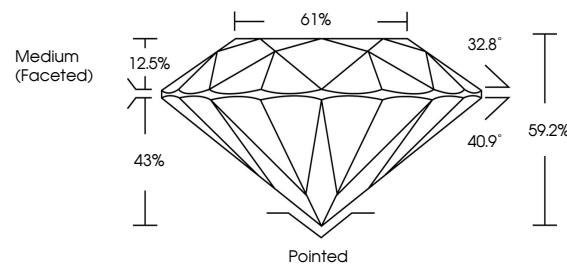
Carat Weight	1.22 CARAT
Color Grade	J
Clarity Grade	VS 1
Cut Grade	EXCELLENT

### ADDITIONAL GRADING INFORMATION

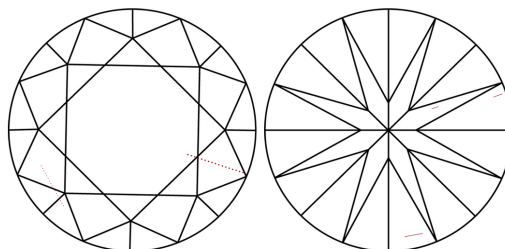
Polish	EXCELLENT
Symmetry	EXCELLENT
Fluorescence	NONE
Inscription(s)	131 627493601

627493601  
Report verification at [igi.org](https://igi.org)

## PROPORTIONS



## CLARITY CHARACTERISTICS



## KEY TO SYMBOLS

Red symbols indicate internal characteristics.  
Green symbols indicate external characteristics.



Sample Image Used

## COLOR

D - F	G - J	K - M	N - R	S - Z	FANCY
Colorless	Near Colorless	Slightly Tinted	Very Light Color	Light Color	

## CLARITY

IF	WS <sup>1-2</sup>	VS <sup>1-2</sup>	SI <sup>1-2</sup>	I <sup>1-3</sup>
Internally Flawless	Very Very Slightly Included	Very Slightly Included	Slightly Included	Included

© IGI 2020, International Gemological Institute

FD - 10 20

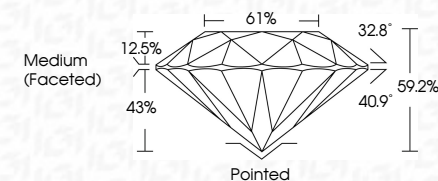
DIAMOND REPORT



May 14, 2024	
IGI Report Number	627493601
Description	NATURAL DIAMOND
Shape and Cutting Style	ROUND BRILLIANT
Measurements	6.95 - 6.99 X 4.13 MM

## GRADING RESULTS

Carat Weight	1.22 CARAT
Color Grade	J
Clarity Grade	VS 1
Cut Grade	EXCELLENT



### ADDITIONAL GRADING INFORMATION

Polish	EXCELLENT
Symmetry	EXCELLENT
Fluorescence	NONE
Inscription(s)	(15) 627493601



IG



THIS DOCUMENT WAS PRODUCED WITH THE FOLLOWING SECURITY MEASURES: SPECIAL DOCUMENT PAPER, INK SCREENS, WATERMARK, BACKGROUND DESIGNS, HOLOGRAM AND OTHER SECURITY FEATURES NOT LISTED AND DO EXCEED DOCUMENT SECURITY INDUSTRY GUIDELINES

May 14, 2024	Carat Weight	Cut Grade	Culet
GI Report No 627493601	Color Grade	Depth	Polish
ROUND BRILLIANT		Table	Symmetry
9.95 - 6.99 X 4.13 MM		Grade	Fluorescence
			Measurements (mm)

**www.igi.org**