



ELECTRONIC COPY

DIAMOND REPORT

May 16, 2024	
IGI Report Number	627493596
Description	NATURAL DIAMOND
Shape and Cutting Style	ROUND BRILLIANT
Measurements	6.74 - 6.80 X 4.21 MM

GRADING RESULTS

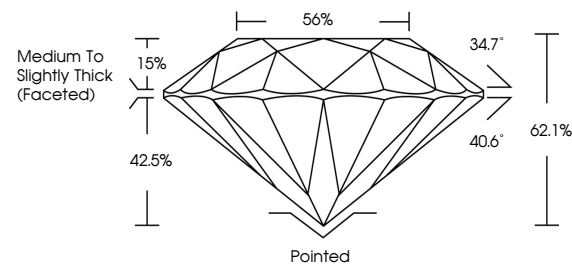
Carat Weight	1.20 CARAT
Color Grade	I
Clarity Grade	VS 2
Cut Grade	EXCELLENT

ADDITIONAL GRADING INFORMATION

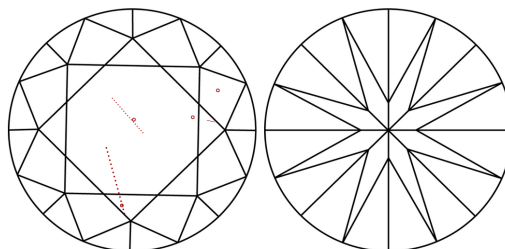
Polish	EXCELLENT
Symmetry	EXCELLENT
Fluorescence	NONE
Inscription(s)	 627493596
Comments: IDEAL CUT ROUND BRILLIANT	

627493596
Report verification at igi.org

PROPORTIONS

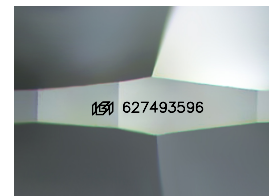


CLARITY CHARACTERISTICS



KEY TO SYMBOLS

Red symbols indicate internal characteristics.
Green symbols indicate external characteristics.



Sample Image Used

COLOR

D - F	G - J	K - M	N - R	S - Z	FANCY
Colorless	Near Colorless	Slightly Tinted	Very Light Color	Light Color	

CLARITY

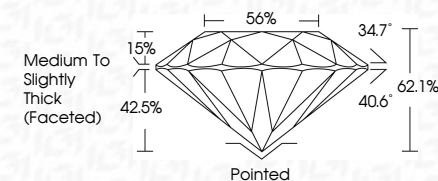
IF	VS ¹⁻²	VS ¹⁻²	SI ¹⁻²	I ¹⁻³
Internally Flawless	Very Very Slightly Included	Very Slightly Included	Slightly Included	Included



May 16, 2024	
IGI Report Number	627493596
Description	NATURAL DIAMOND
Shape and Cutting Style	ROUND BRILLIANT
Measurements	6.74 - 6.80 X 4.21 MM

GRADING RESULTS

Carat Weight	1.20 CARAT
Color Grade	I
Clarity Grade	VS 2
Cut Grade	EXCELLENT



ADDITIONAL GRADING INFORMATION

Polish	EXCELLENT
Symmetry	EXCELLENT
Fluorescence	NONE
Inscription(s)	(G) 627493596
Comments: IDEAL CUT ROUND BRILLIANT	



IG



© IGI 2020, International Gemmological Institute

FD - 10 20



THIS DOCUMENT WAS PRODUCED WITH THE FOLLOWING SECURITY MEASURES: SPECIAL DOCUMENT PAPER, INK SCREENS, WATERMARK, BACKGROUND DESIGNS, HOLOGRAM AND OTHER SECURITY FEATURES NOT LISTED AND DO EXCEED DOCUMENT SECURITY INDUSTRY GUIDELINES

May 16, 2024
GI Report No 627493596
ROUND BRILLIANT

1.20 CARAT	VS 2	EXCELLENT	62.1%	56%	Medium to Slightly Thick Faceted	Polished	EXCELLENT	EXCELLENT	NONE	see 627459594
1.20 CARAT	VS 2	EXCELLENT	62.1%	56%	Medium to Slightly Thick Faceted	Polished	EXCELLENT	EXCELLENT	NONE	see 627459594

Comments:
DEAL CUT ROUND BRILLIANT

www.igi.org