



627491754

DIAMOND REPORT ELECTRONIC COPY



April 8, 2024
IGI Report Number 627491754
Description NATURAL DIAMOND
Shape and Cutting Style ROUND BRILLIANT
Measurements 6.75 - 6.81 x 4.24 mm

GRADING RESULTS

Carat Weight 1.20 CARAT
Color Grade I
Clarity Grade VVS 1
Cut Grade EXCELLENT

April 8, 2024
IGI Report Number 627491754
Description NATURAL DIAMOND
Shape and Cutting Style ROUND BRILLIANT
Measurements 6.75 - 6.81 x 4.24 mm

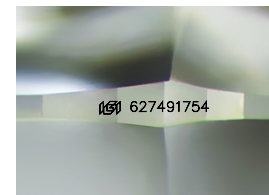
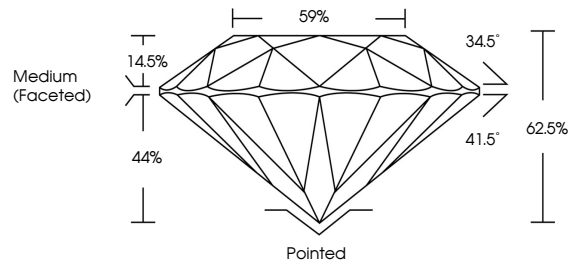
GRADING RESULTS

Carat Weight 1.20 CARAT
Color Grade I
Clarity Grade VVS 1
Cut Grade EXCELLENT

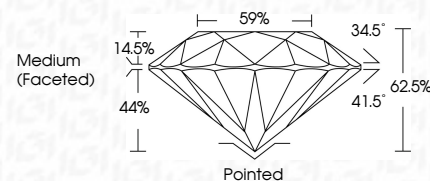
ADDITIONAL GRADING INFORMATION

Polish EXCELLENT
Symmetry EXCELLENT
Fluorescence NONE
Inscription(s) IGI 627491754
Comments: IDEAL CUT ROUND BRILLIANT

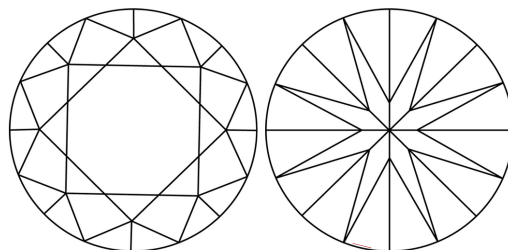
PROPORTIONS



Sample Image Used



CLARITY CHARACTERISTICS



KEY TO SYMBOLS

Red symbols indicate internal characteristics.
Green symbols indicate external characteristics.

COLOR

Table with columns: D - F, G - J, K - M, N - R, S - Z, FANCY. Row: Colorless, Near Colorless, Slightly Tinted, Very Light Color, Light Color

CLARITY

Table with columns: IF, VVS 1-2, VS 1-2, SI 1-2, I 1-3. Row: Internally Flawless, Very Very Slightly Included, Very Slightly Included, Slightly Included, Included

ADDITIONAL GRADING INFORMATION

Polish EXCELLENT
Symmetry EXCELLENT
Fluorescence NONE
Inscription(s) IGI 627491754
Comments: IDEAL CUT ROUND BRILLIANT



IGI

April 8, 2024
IGI Report No. 627491754
NATURAL DIAMOND
ROUND BRILLIANT
6.75 - 6.81 x 4.24 mm
Carat Weight 1.20 CARAT
Color Grade I
Clarity Grade VVS 1
Cut Grade EXCELLENT
Depth 62.5%
Table 59%
Grade Medium (Faceted)
Cut Pointed
Polish EXCELLENT
Symmetry EXCELLENT
Fluorescence NONE
Inscription(s) IGI 627491754
Comments: IDEAL CUT ROUND BRILLIANT