



**ELECTRONIC COPY**

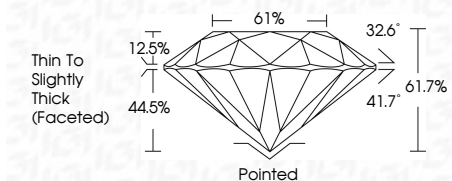
623429348  
Report verification at [igi.org](http://igi.org)



October 8, 2024  
IGI Report Number **623429348**  
Description **NATURAL DIAMOND**  
Shape and Cutting Style **ROUND BRILLIANT**  
Measurements **10.90 - 10.95 X 6.74 MM**

**GRADING RESULTS**

Carat Weight **5.01 CARATS**  
Color Grade **G**  
Clarity Grade **SI 2**  
Cut Grade **EXCELLENT**

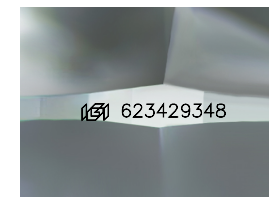


**ADDITIONAL GRADING INFORMATION**

Polish **EXCELLENT**  
Symmetry **EXCELLENT**  
Fluorescence **SLIGHT**  
Inscription(s) **(IGI) 623429348**

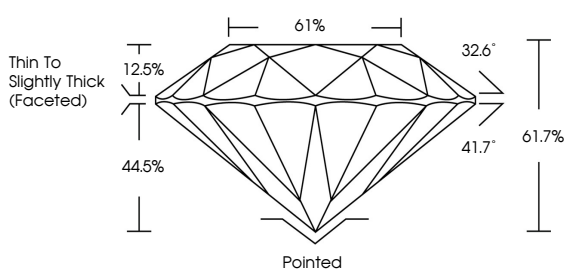


October 8, 2024  
IGI Report No. 623429348  
**ROUND BRILLIANT**  
10.90 - 10.95 X 6.74 MM  
5.01 CARATS  
G  
SI 2  
EXCELLENT  
61.7%  
61%  
Thin to Slightly Thick (Faceted)  
Pointed  
EXCELLENT  
EXCELLENT  
SLIGHT  
(IGI) 623429348

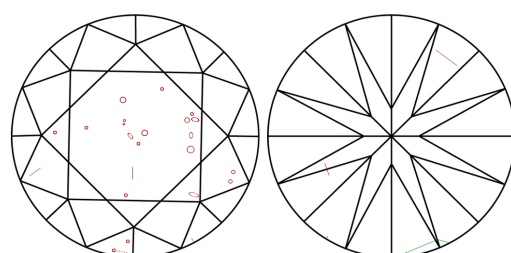


Sample Image Used

**PROPORTIONS**



**CLARITY CHARACTERISTICS**



**KEY TO SYMBOLS**

Red symbols indicate internal characteristics.  
Green symbols indicate external characteristics.

**COLOR**

D - F	G - J	K - M	N - R	S - Z	FANCY
Colorless	Near Colorless	Slightly Tinted	Very Light Color	Light Color	

**CLARITY**

IF	VS <sup>1-2</sup>	VS <sup>1-2</sup>	SI <sup>1-2</sup>	I <sup>1-3</sup>
Internally Flawless	Very Very Slightly Included	Very Slightly Included	Slightly Included	Included



October 8, 2024  
IGI Report Number **623429348**  
Description **NATURAL DIAMOND**  
Shape and Cutting Style **ROUND BRILLIANT**  
Measurements **10.90 - 10.95 X 6.74 MM**

**GRADING RESULTS**

Carat Weight **5.01 CARATS**  
Color Grade **G**  
Clarity Grade **SI 2**  
Cut Grade **EXCELLENT**

**ADDITIONAL GRADING INFORMATION**

Polish **EXCELLENT**  
Symmetry **EXCELLENT**  
Fluorescence **SLIGHT**  
Inscription(s) **(IGI) 623429348**