



621475032

DIAMOND REPORT ELECTRONIC COPY



February 24, 2024
IGI Report Number 621475032
Description NATURAL DIAMOND
Shape and Cutting Style ROUND BRILLIANT
Measurements 6.08 - 6.10 x 3.86 mm

GRADING RESULTS

Carat Weight 0.90 CARAT
Color Grade K
Clarity Grade VVS 2
Cut Grade EXCELLENT

February 24, 2024
IGI Report Number 621475032
Description NATURAL DIAMOND
Shape and Cutting Style ROUND BRILLIANT
Measurements 6.08 - 6.10 x 3.86 mm

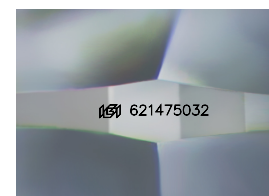
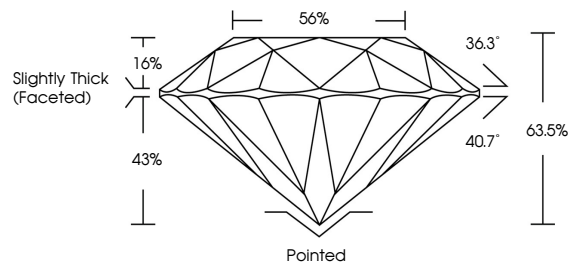
GRADING RESULTS

Carat Weight 0.90 CARAT
Color Grade K
Clarity Grade VVS 2
Cut Grade EXCELLENT

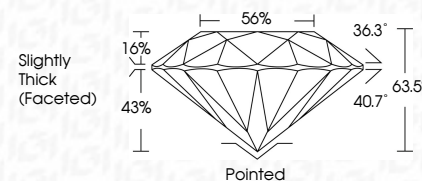
ADDITIONAL GRADING INFORMATION

Polish EXCELLENT
Symmetry EXCELLENT
Fluorescence NONE
Inscription(s) IGI 621475032

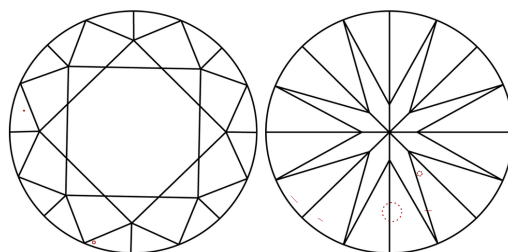
PROPORTIONS



Sample Image Used



CLARITY CHARACTERISTICS



KEY TO SYMBOLS

Red symbols indicate internal characteristics.
Green symbols indicate external characteristics.

COLOR

Table with columns D-F, G-J, K-M, N-R, S-Z, FANCY and rows Colorless, Near Colorless, Slightly Tinted, Very Light Color, Light Color

CLARITY

Table with columns IF, VS 1-2, VS 1-2, SI 1-2, I 1-3 and rows Internally Flawless, Very Very Slightly Included, Very Slightly Included, Slightly Included, Included

ADDITIONAL GRADING INFORMATION

Polish EXCELLENT
Symmetry EXCELLENT
Fluorescence NONE
Inscription(s) IGI 621475032



IGI



February 24, 2024
IGI Report No. 621475032
NATURAL DIAMOND
ROUND BRILLIANT
6.08 - 6.10 x 3.86 mm
Carat Weight 0.90 CARAT
Color Grade K
Clarity Grade VVS 2
Cut Grade EXCELLENT
Depth 63.5%
Table 56%
Grade Slightly Thick (Faceted)
Cut Pointed
Polish EXCELLENT
Symmetry EXCELLENT
Fluorescence NONE
Inscription(s) IGI 621475032