



# INTERNATIONAL GEMOLOGICAL INSTITUTE

## DIAMOND REPORT

ELECTRONIC COPY

March 7, 2024  
IGI Report Number 619460531  
Description NATURAL DIAMOND  
Shape and Cutting Style ROUND BRILLIANT  
Measurements 4.79 - 4.86 x 2.94 mm

### GRADING RESULTS

Carat Weight 0.42 CARAT  
Color Grade E  
Clarity Grade SI 1  
Cut Grade EXCELLENT

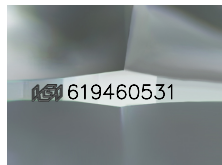
### ADDITIONAL GRADING INFORMATION

Polish EXCELLENT  
Symmetry EXCELLENT  
Fluorescence SLIGHT

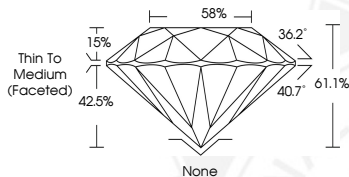
Identification Features CRYSTAL, CLOUD  
Inscription(s) IGI 619460531  
Comments: IDEAL CUT ROUND BRILLIANT



619460531



Sample Image Used



### COLOR

D - F	G - J	K - M	N - R	S - Z	FANCY
Colorless	Near Colorless	Slightly Tinted	Very Light Color	Light Color	

### CLARITY

IF	VVS <sup>1-2</sup>	VS <sup>1-2</sup>	SI <sup>1-2</sup>	I <sup>1-2</sup>
Internally Flawless	Very Very Slightly Included	Very Slightly Included	Slightly Included	Included

© IGI 2020, International Gemological Institute

FD - 10 20

THIS DOCUMENT WAS PRODUCED WITH THE FOLLOWING SECURITY MEASURES: SPECIAL DOCUMENT PAPER, INK SCREENS, WATERMARK, BACKGROUND DESIGNS, HOLOGRAM AND OTHER SECURITY FEATURES NOT LISTED AND DO EXCEED DOCUMENT SECURITY INDUSTRY GUIDELINES.



March 7, 2024  
IGI Report Number 619460531  
NATURAL DIAMOND  
ROUND BRILLIANT  
4.79 - 4.86 x 2.94 mm  
Carat Weight 0.42 CARAT  
Color Grade E  
Clarity Grade SI 1  
Cut Grade EXCELLENT  
Polish EXCELLENT  
Symmetry EXCELLENT  
Fluorescence SLIGHT  
Inscription(s) IGI 619460531  
Comments: IDEAL CUT ROUND BRILLIANT



March 7, 2024  
IGI Report Number 619460531  
NATURAL DIAMOND  
ROUND BRILLIANT  
4.79 - 4.86 x 2.94 mm  
Carat Weight 0.42 CARAT  
Color Grade E  
Clarity Grade SI 1  
Cut Grade EXCELLENT  
Polish EXCELLENT  
Symmetry EXCELLENT  
Fluorescence SLIGHT  
Inscription(s) IGI 619460531  
Comments: IDEAL CUT ROUND BRILLIANT