



ELECTRONIC COPY

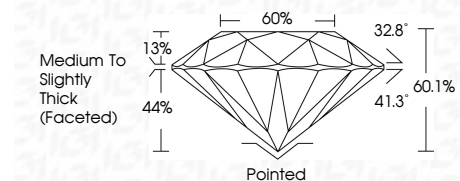
616497408
Report verification at igi.org



August 5, 2024
IGI Report Number **616497408**
Description **NATURAL DIAMOND**
Shape and Cutting Style **ROUND BRILLIANT**
Measurements **16.79 - 16.92 X 10.14 MM**

GRADING RESULTS

Carat Weight **17.73 CARATS**
Color Grade **J**
Clarity Grade **SI 1**
Cut Grade **EXCELLENT**



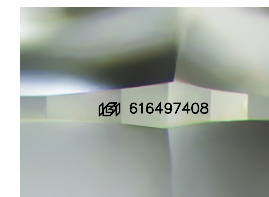
ADDITIONAL GRADING INFORMATION

Polish **EXCELLENT**
Symmetry **EXCELLENT**
Fluorescence **SLIGHT**
Inscription(s) **IGI 616497408**
Comments: IDEAL CUT ROUND BRILLIANT



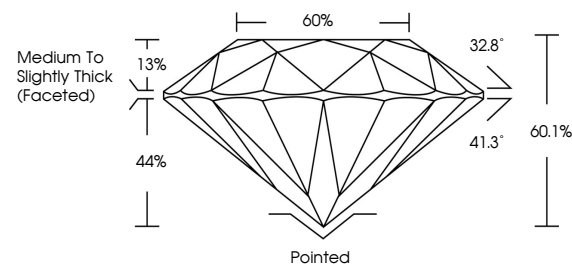
IGI

August 5, 2024
IGI Report No 616497408
ROUND BRILLIANT
16.79 - 16.92 X 10.14 MM
17.73 CARATS
J
SI 1
EXCELLENT
60.1%
60%
Medium to Slightly Thick (Faceted)
Pointed
EXCELLENT
EXCELLENT
SLIGHT
IGI 616497408
Comments: IDEAL CUT ROUND BRILLIANT

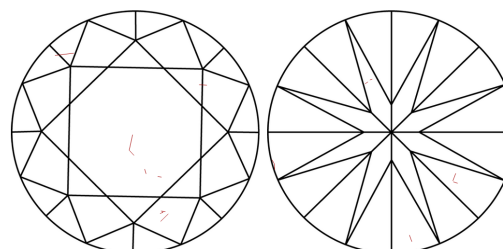


Sample Image Used

PROPORTIONS



CLARITY CHARACTERISTICS



KEY TO SYMBOLS

Red symbols indicate internal characteristics.
Green symbols indicate external characteristics.

COLOR

D - F	G - J	K - M	N - R	S - Z	FANCY
Colorless	Near Colorless	Slightly Tinted	Very Light Color	Light Color	

CLARITY

IF	VS ¹⁻²	VS ¹⁻²	SI ¹⁻²	I ¹⁻³
Internally Flawless	Very Very Slightly Included	Very Slightly Included	Slightly Included	Included

