



ELECTRONIC COPY

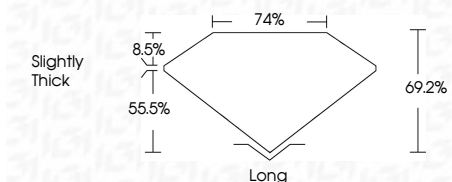
613369529
Report verification at igi.org



October 5, 2024
IGI Report Number **613369529**
Description **NATURAL DIAMOND**
Shape and Cutting Style **EMERALD CUT**
Measurements **11.88 X 8.94 X 6.19 MM**

GRADING RESULTS

Carat Weight **6.16 CARATS**
Color Grade **J**
Clarity Grade **VS 1**
Cut Grade **VERY GOOD**



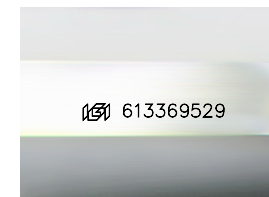
ADDITIONAL GRADING INFORMATION

Polish **EXCELLENT**
Symmetry **EXCELLENT**
Fluorescence **NONE**
Inscription(s) **(IGI) 613369529**



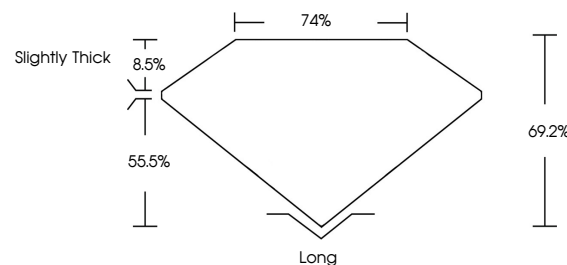
IGI

October 5, 2024
IGI Report No. 613369529
EMERALD CUT
11.88 X 8.94 X 6.19 MM
6.16 CARATS
J
VS 1
VERY GOOD
69.2%
74%
Slightly Thick
Long
EXCELLENT
EXCELLENT
NONE
(IGI) 613369529

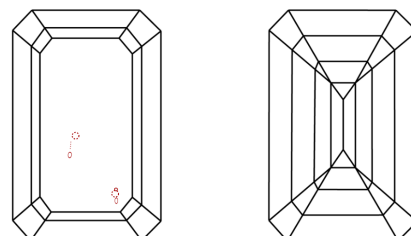


Sample Image Used

PROPORTIONS



CLARITY CHARACTERISTICS



KEY TO SYMBOLS

Red symbols indicate internal characteristics.
Green symbols indicate external characteristics.

COLOR

D - F	G - J	K - M	N - R	S - Z	FANCY
Colorless	Near Colorless	Slightly Tinted	Very Light Color	Light Color	

CLARITY

IF	VS ¹⁻²	VS ¹⁻²	SI ¹⁻²	I ¹⁻³
Internally Flawless	Very Very Slightly Included	Very Slightly Included	Slightly Included	Included



October 5, 2024
IGI Report Number **613369529**
Description **NATURAL DIAMOND**
Shape and Cutting Style **EMERALD CUT**
Measurements **11.88 X 8.94 X 6.19 MM**

GRADING RESULTS

Carat Weight **6.16 CARATS**
Color Grade **J**
Clarity Grade **VS 1**
Cut Grade **VERY GOOD**

ADDITIONAL GRADING INFORMATION

Polish **EXCELLENT**
Symmetry **EXCELLENT**
Fluorescence **NONE**
Inscription(s) **(IGI) 613369529**