



605399601

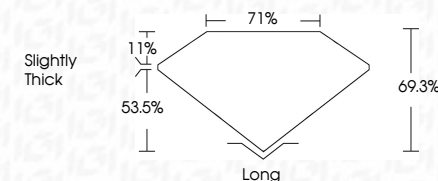
**DIAMOND REPORT** **ELECTRONIC COPY**



November 23, 2023  
 IGI Report Number 605399601  
 Description NATURAL DIAMOND  
 Shape and Cutting Style EMERALD CUT  
 Measurements 7.12 x 5.18 x 3.59 mm

**GRADING RESULTS**

Carat Weight 1.25 CARAT  
 Color Grade L  
 Clarity Grade VVS 1  
 Cut Grade VERY GOOD



**ADDITIONAL GRADING INFORMATION**

Polish EXCELLENT  
 Symmetry EXCELLENT  
 Fluorescence NONE  
 Inscription(s) IGI 605399601



**IGI**

November 23, 2023  
 IGI Report No. 605399601  
 NATURAL DIAMOND  
 EMERALD CUT  
 7.12 x 5.18 x 3.59 mm  
 Carat Weight 1.25 CARAT  
 Color Grade L  
 Clarity Grade VVS 1  
 Cut Grade VERY GOOD  
 Depth 69.3%  
 Table 71%  
 Grade Slightly Thick  
 Cut Long  
 Polish EXCELLENT  
 Symmetry EXCELLENT  
 Fluorescence NONE  
 Inscription(s) IGI 605399601

November 23, 2023  
 IGI Report Number 605399601  
 Description NATURAL DIAMOND  
 Shape and Cutting Style EMERALD CUT  
 Measurements 7.12 x 5.18 x 3.59 mm

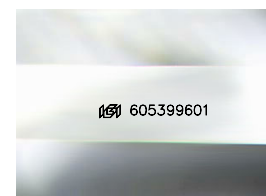
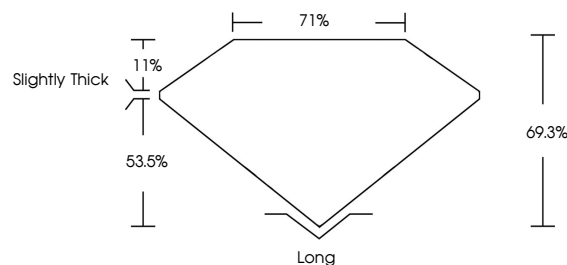
**GRADING RESULTS**

Carat Weight 1.25 CARAT  
 Color Grade L  
 Clarity Grade VVS 1  
 Cut Grade VERY GOOD

**ADDITIONAL GRADING INFORMATION**

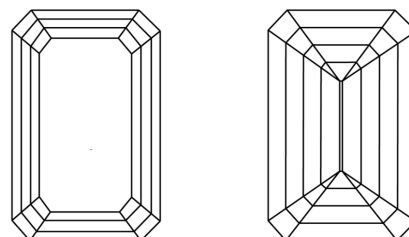
Polish EXCELLENT  
 Symmetry EXCELLENT  
 Fluorescence NONE  
 Inscription(s) IGI 605399601

**PROPORTIONS**



Sample Image Used

**CLARITY CHARACTERISTICS**



**KEY TO SYMBOLS**

Red symbols indicate internal characteristics.  
 Green symbols indicate external characteristics.

**COLOR**

D - F	G - J	K - M	N - R	S - Z	FANCY
Colorless	Near Colorless	Slightly Tinted	Very Light Color	Light Color	

**CLARITY**

IF	VS <sup>1-2</sup>	VS <sup>1-2</sup>	SI <sup>1-2</sup>	I <sup>1-3</sup>
Internally Flawless	Very Very Slightly Included	Very Slightly Included	Slightly Included	Included

