



**ELECTRONIC COPY**

601315913  
Report verification at [igi.org](http://igi.org)



May 7, 2024  
IGI Report Number **601315913**  
Description **NATURAL DIAMOND**  
Shape and Cutting Style **HEART BRILLIANT**  
Measurements **6.87 X 8.03 X 4.43 MM**  
**GRADING RESULTS**  
Carat Weight **1.50 CARAT**  
Color Grade **J**  
Clarity Grade **VVS 2**  
Cut Grade **VERY GOOD**

**DIAMOND REPORT**

May 7, 2024  
IGI Report Number **601315913**  
Description **NATURAL DIAMOND**  
Shape and Cutting Style **HEART BRILLIANT**  
Measurements **6.87 X 8.03 X 4.43 MM**

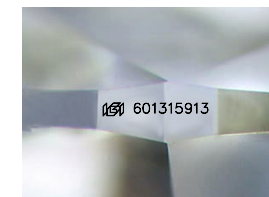
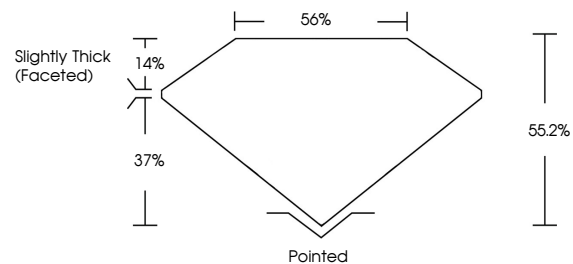
**GRADING RESULTS**

Carat Weight **1.50 CARAT**  
Color Grade **J**  
Clarity Grade **VVS 2**  
Cut Grade **VERY GOOD**

**ADDITIONAL GRADING INFORMATION**

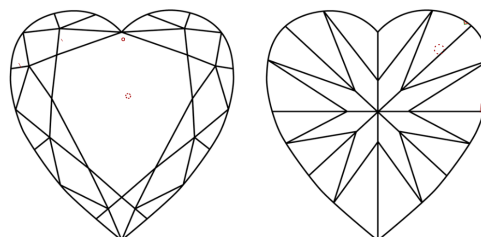
Polish **EXCELLENT**  
Symmetry **EXCELLENT**  
Fluorescence **VERY SLIGHT**  
Inscription(s) **601315913**

**PROPORTIONS**



Sample Image Used

**CLARITY CHARACTERISTICS**



**KEY TO SYMBOLS**

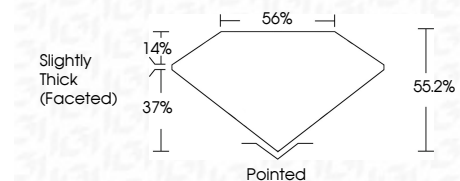
Red symbols indicate internal characteristics.  
Green symbols indicate external characteristics.

**COLOR**

D - F	G - J	K - M	N - R	S - Z	FANCY
Colorless	Near Colorless	Slightly Tinted	Very Light Color	Light Color	

**CLARITY**

IF	VVS <sup>1-2</sup>	VS <sup>1-2</sup>	SI <sup>1-2</sup>	I <sup>1-3</sup>
Internally Flawless	Very Very Slightly Included	Very Slightly Included	Slightly Included	Included



**ADDITIONAL GRADING INFORMATION**

Polish **EXCELLENT**  
Symmetry **EXCELLENT**  
Fluorescence **VERY SLIGHT**  
Inscription(s) **601315913**



**IGI**



May 7, 2024  
IGI Report No 601315913  
**HEART BRILLIANT**  
6.87 X 8.03 X 4.43 MM  
1.50 CARAT  
J  
VVS 2  
VERY GOOD  
56.2%  
55.2%  
Slightly Thick (Faceted)  
Pointed  
EXCELLENT  
EXCELLENT  
VERY SLIGHT  
601315913