



600302397

**DIAMOND REPORT** **ELECTRONIC COPY**



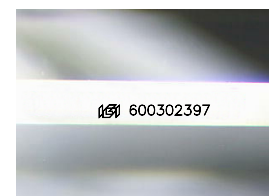
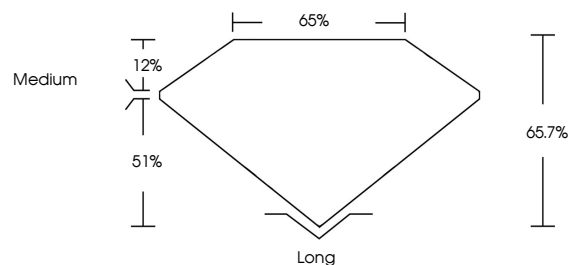
December 11, 2023  
 IGI Report Number 600302397  
 Description NATURAL DIAMOND  
 Shape and Cutting Style EMERALD CUT  
 Measurements 13.69 x 9.68 x 6.36 mm  
**GRADING RESULTS**  
 Carat Weight 8.01 CARATS  
 Color Grade J  
 Clarity Grade VVS 2  
 Cut Grade VERY GOOD

December 11, 2023  
 IGI Report Number 600302397  
 Description NATURAL DIAMOND  
 Shape and Cutting Style EMERALD CUT  
 Measurements 13.69 x 9.68 x 6.36 mm

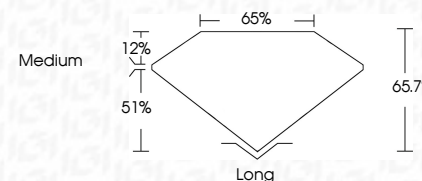
**GRADING RESULTS**  
 Carat Weight 8.01 CARATS  
 Color Grade J  
 Clarity Grade VVS 2  
 Cut Grade VERY GOOD

**ADDITIONAL GRADING INFORMATION**  
 Polish EXCELLENT  
 Symmetry EXCELLENT  
 Fluorescence NONE  
 Inscription(s) IGI 600302397

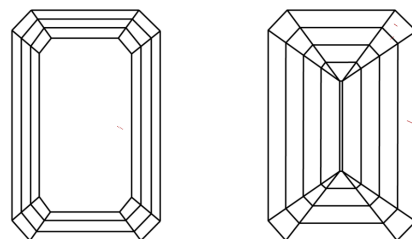
**PROPORTIONS**



Sample Image Used



**CLARITY CHARACTERISTICS**



**KEY TO SYMBOLS**

Red symbols indicate internal characteristics.  
 Green symbols indicate external characteristics.

**COLOR**

D - F	G - J	K - M	N - R	S - Z	FANCY
Colorless	Near Colorless	Slightly Tinted	Very Light Color	Light Color	

**CLARITY**

IF	VS <sup>1-2</sup>	VS <sup>1-2</sup>	SI <sup>1-2</sup>	I <sup>1-3</sup>
Internally Flawless	Very Very Slightly Included	Very Slightly Included	Slightly Included	Included

**ADDITIONAL GRADING INFORMATION**

Polish EXCELLENT  
 Symmetry EXCELLENT  
 Fluorescence NONE  
 Inscription(s) IGI 600302397



**IGI**

December 11, 2023  
 IGI Report No. 600302397  
 NATURAL DIAMOND  
 EMERALD CUT  
 13.69 x 9.68 x 6.36 mm  
 Carat Weight 8.01 CARATS  
 Color Grade J  
 Clarity Grade VVS2  
 Cut Grade VERY GOOD  
 Depth 65.7%  
 Table 65%  
 Grade Medium  
 Cut Long  
 Polish EXCELLENT  
 Symmetry EXCELLENT  
 Fluorescence NONE  
 Inscription(s) IGI 600302397