



598325807

DIAMOND REPORT **ELECTRONIC COPY**



September 26, 2023
 IGI Report Number 598325807
 Description NATURAL DIAMOND
 Shape and Cutting Style ROUND BRILLIANT
 Measurements 8.91 - 9.01 x 5.83 mm

GRADING RESULTS

Carat Weight 3.01 CARATS
 Color Grade N
 Clarity Grade VVS 2
 Cut Grade VERY GOOD

September 26, 2023
 IGI Report Number 598325807
 Description NATURAL DIAMOND
 Shape and Cutting Style ROUND BRILLIANT
 Measurements 8.91 - 9.01 x 5.83 mm

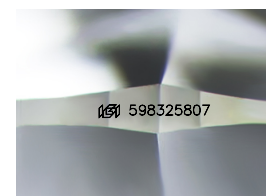
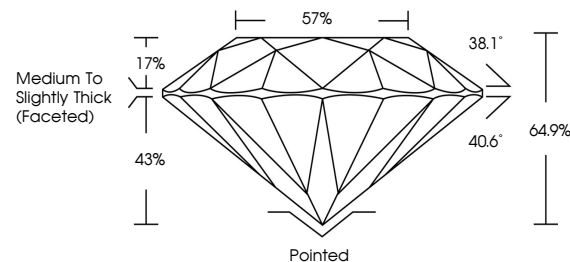
GRADING RESULTS

Carat Weight 3.01 CARATS
 Color Grade N
 Clarity Grade VVS 2
 Cut Grade VERY GOOD

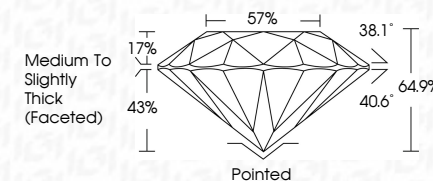
ADDITIONAL GRADING INFORMATION

Polish EXCELLENT
 Symmetry EXCELLENT
 Fluorescence VERY SLIGHT
 Inscription(s) 598325807

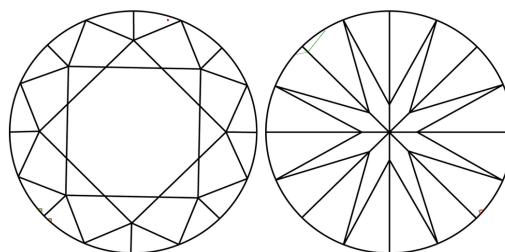
PROPORTIONS



Sample Image Used



CLARITY CHARACTERISTICS



KEY TO SYMBOLS

Red symbols indicate internal characteristics.
 Green symbols indicate external characteristics.

COLOR

D - F	G - J	K - M	N - R	S - Z	FANCY
Colorless	Near Colorless	Slightly Tinted	Very Light Color	Light Color	

CLARITY

IF	VS ¹⁻²	VS ¹⁻²	SI ¹⁻²	I ¹⁻³
Internally Flawless	Very Very Slightly Included	Very Slightly Included	Slightly Included	Included

ADDITIONAL GRADING INFORMATION

Polish EXCELLENT
 Symmetry EXCELLENT
 Fluorescence VERY SLIGHT
 Inscription(s) 598325807



IGI



September 26, 2023
 IGI Report No 598325807
 NATURAL DIAMOND
 ROUND BRILLIANT
 8.91 - 9.01 x 5.83 mm
 Carat Weight 3.01 CARATS
 Color Grade N
 Clarity Grade VVS 2
 Cut Grade VERY GOOD
 Depth 64.9%
 Table 57%
 Grade Medium To Slightly Thick (Faceted)
 Claret Pointed
 Polish EXCELLENT
 Symmetry EXCELLENT
 Fluorescence VERY SLIGHT
 Inscription(s) 598325807