



**DIAMOND REPORT**

**ELECTRONIC COPY**

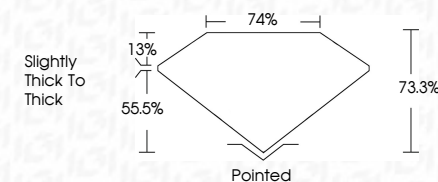
595382299



August 31, 2023  
IGI Report Number 595382299  
Description NATURAL DIAMOND  
Shape and Cutting Style PRINCESS CUT  
Measurements 6.13 x 6.10 x 4.47 mm

**GRADING RESULTS**

Carat Weight 1.51 CARAT  
Color Grade J  
Clarity Grade VVS 1  
Cut Grade VERY GOOD



August 31, 2023  
IGI Report Number 595382299  
Description NATURAL DIAMOND  
Shape and Cutting Style PRINCESS CUT  
Measurements 6.13 x 6.10 x 4.47 mm

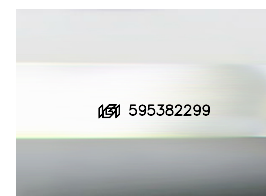
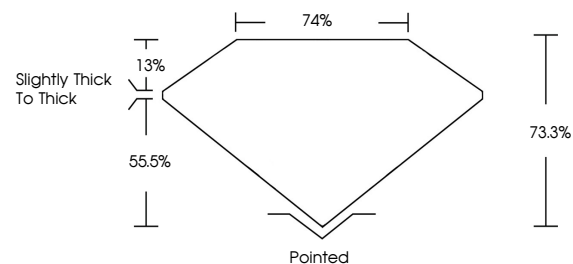
**GRADING RESULTS**

Carat Weight 1.51 CARAT  
Color Grade J  
Clarity Grade VVS 1  
Cut Grade VERY GOOD

**ADDITIONAL GRADING INFORMATION**

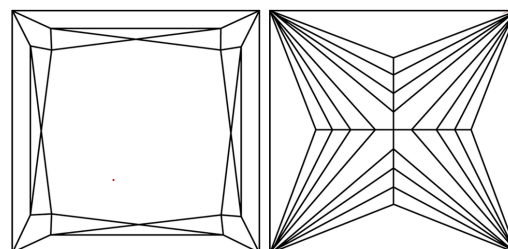
Polish EXCELLENT  
Symmetry EXCELLENT  
Fluorescence NONE  
Inscription(s) IGI 595382299

**PROPORTIONS**



Sample Image Used

**CLARITY CHARACTERISTICS**



**KEY TO SYMBOLS**

Red symbols indicate internal characteristics.  
Green symbols indicate external characteristics.

**COLOR**

D - F	G - J	K - M	N - R	S - Z	FANCY
Colorless	Near Colorless	Slightly Tinted	Very Light Color	Light Color	

**CLARITY**

IF	VS <sup>1-2</sup>	VS <sup>1-2</sup>	SI <sup>1-2</sup>	I <sup>1-3</sup>
Internally Flawless	Very Very Slightly Included	Very Slightly Included	Slightly Included	Included

**ADDITIONAL GRADING INFORMATION**

Polish EXCELLENT  
Symmetry EXCELLENT  
Fluorescence NONE  
Inscription(s) IGI 595382299



**IGI**

August 31, 2023  
IGI Report No 595382299  
NATURAL DIAMOND  
PRINCESS CUT  
6.13 x 6.10 x 4.47 mm  
Carat Weight 1.51 CARAT  
Color Grade J  
Clarity Grade VVS 1  
Cut Grade VERY GOOD  
Depth 73.3%  
Table 74%  
Grade Slightly Thick To Thick  
Culet Pointed  
Polish EXCELLENT  
Symmetry EXCELLENT  
Fluorescence NONE  
Inscription(s) IGI 595382299