



ELECTRONIC COPY

593302247
Report verification at igi.org



July 26, 2024

IGI Report Number **593302247**

Description **NATURAL DIAMOND**

Shape and Cutting Style **ROUND BRILLIANT**

Measurements **11.67 - 11.76 X 7.12 MM**

GRADING RESULTS

Carat Weight **6.01 CARATS**

Color Grade **I**

Clarity Grade **INTERNALLY FLAWLESS**

Cut Grade **EXCELLENT**

DIAMOND REPORT

July 26, 2024

IGI Report Number **593302247**

Description **NATURAL DIAMOND**

Shape and Cutting Style **ROUND BRILLIANT**

Measurements **11.67 - 11.76 X 7.12 MM**

GRADING RESULTS

Carat Weight **6.01 CARATS**

Color Grade **I**

Clarity Grade **INTERNALLY FLAWLESS**

Cut Grade **EXCELLENT**

ADDITIONAL GRADING INFORMATION

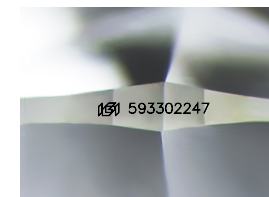
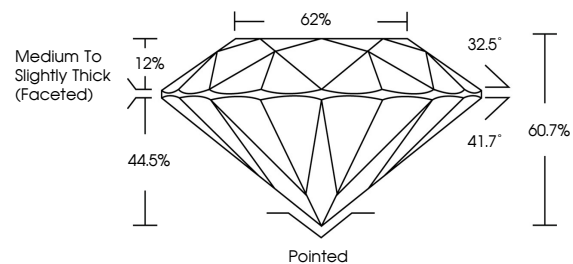
Polish **EXCELLENT**

Symmetry **EXCELLENT**

Fluorescence **NONE**

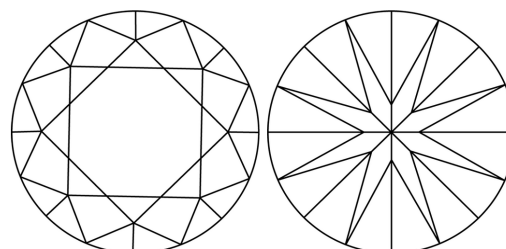
Inscription(s) **593302247**

PROPORTIONS



Sample Image Used

CLARITY CHARACTERISTICS



KEY TO SYMBOLS

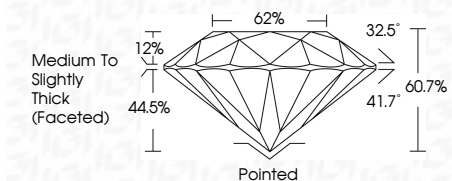
Red symbols indicate internal characteristics.
Green symbols indicate external characteristics.

COLOR

D - F	G - J	K - M	N - R	S - Z	FANCY
Colorless	Near Colorless	Slightly Tinted	Very Light Color	Light Color	

CLARITY

IF	VS ¹⁻²	VS ¹⁻²	SI ¹⁻²	I ¹⁻³
Internally Flawless	Very Very Slightly Included	Very Slightly Included	Slightly Included	Included



ADDITIONAL GRADING INFORMATION

Polish **EXCELLENT**

Symmetry **EXCELLENT**

Fluorescence **NONE**

Inscription(s) **593302247**



IGI

July 26, 2024
IGI Report No. 593302247
ROUND BRILLIANT

11.67 - 11.76 X 7.12 MM

6.01 CARATS

I

EXCELLENT

EXCELLENT

60.7%

62%

Medium To Slightly Thick (Faceted)

Pointed

EXCELLENT

EXCELLENT

NONE

IGI 593302247

Culet
Polish
Symmetry
Fluorescence
Inscription(s)

