



**ELECTRONIC COPY**

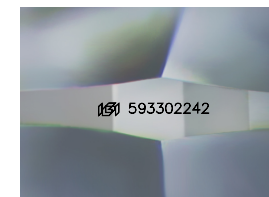
593302242  
Report verification at [igi.org](http://igi.org)



July 25, 2024  
IGI Report Number **593302242**  
Description **NATURAL DIAMOND**  
Shape and Cutting Style **ROUND BRILLIANT**  
Measurements **12.11 - 12.20 X 7.70 MM**

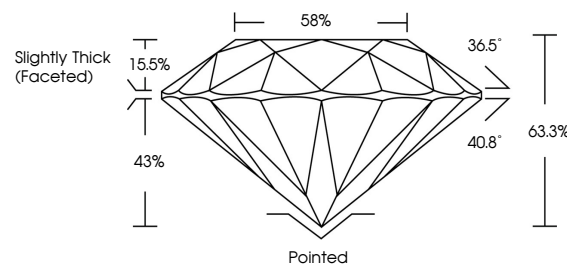
**GRADING RESULTS**

Carat Weight **7.20 CARATS**  
Color Grade **I**  
Clarity Grade **VS 1**  
Cut Grade **EXCELLENT**

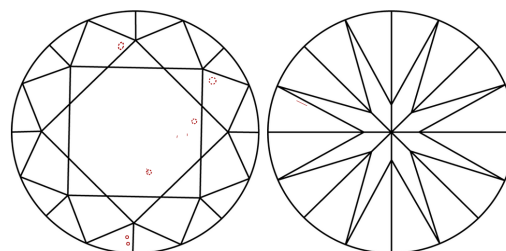


Sample Image Used

**PROPORTIONS**

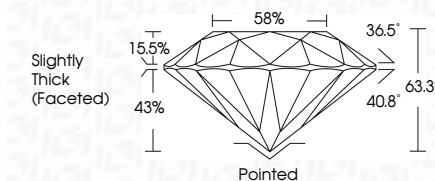


**CLARITY CHARACTERISTICS**



**KEY TO SYMBOLS**

Red symbols indicate internal characteristics.  
Green symbols indicate external characteristics.



**ADDITIONAL GRADING INFORMATION**

Polish **EXCELLENT**  
Symmetry **EXCELLENT**  
Fluorescence **NONE**  
Inscription(s) **IGI 593302242**

**DIAMOND REPORT**

July 25, 2024  
IGI Report Number **593302242**  
Description **NATURAL DIAMOND**  
Shape and Cutting Style **ROUND BRILLIANT**  
Measurements **12.11 - 12.20 X 7.70 MM**

**GRADING RESULTS**

Carat Weight **7.20 CARATS**  
Color Grade **I**  
Clarity Grade **VS 1**  
Cut Grade **EXCELLENT**

**ADDITIONAL GRADING INFORMATION**

Polish **EXCELLENT**  
Symmetry **EXCELLENT**  
Fluorescence **NONE**  
Inscription(s) **IGI 593302242**

**COLOR**

D - F	G - J	K - M	N - R	S - Z	FANCY
Colorless	Near Colorless	Slightly Tinted	Very Light Color	Light Color	

**CLARITY**

IF	VS <sup>1-2</sup>	VS <sup>1-2</sup>	SI <sup>1-2</sup>	I <sup>1-3</sup>
Internally Flawless	Very Very Slightly Included	Very Slightly Included	Slightly Included	Included



**IGI**

July 25, 2024  
IGI Report No. 593302242  
**ROUND BRILLIANT**  
12.11 - 12.20 X 7.70 MM  
7.20 CARATS  
Color Grade **I**  
Clarity Grade **VS 1**  
Depth **63.3%**  
Table **58%**  
Girdle **Slightly Thick (Faceted)**  
Culet **Pointed**  
Polish **EXCELLENT**  
Symmetry **EXCELLENT**  
Fluorescence **NONE**  
Inscription(s) **IGI 593302242**