



**INTERNATIONAL
GEMOLOGICAL
INSTITUTE**

583335893

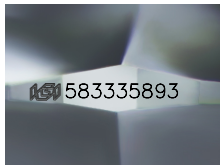


June 15, 2023
IGI Report Number 583335893
NATURAL DIAMOND
ROUND BRILLIANT
4.46 - 4.49 x 2.83 mm
Carat Weight 0.35 CARAT
Color Grade N
Clarity Grade VS 2
Cut Grade EXCELLENT
Polish EXCELLENT
Symmetry EXCELLENT
Fluorescence NONE
Inscription(s) IGI 583335893

DIAMOND REPORT

ELECTRONIC COPY

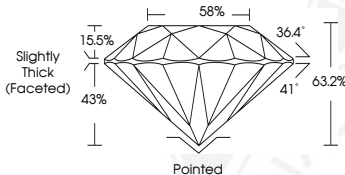
June 15, 2023
IGI Report Number 583335893
Description NATURAL DIAMOND
Shape and Cutting Style ROUND BRILLIANT
Measurements 4.46 - 4.49 x 2.83 mm



Sample Image Used

GRADING RESULTS

Carat Weight 0.35 CARAT
Color Grade N
Clarity Grade VS 2
Cut Grade EXCELLENT



ADDITIONAL GRADING INFORMATION

Polish EXCELLENT
Symmetry EXCELLENT
Fluorescence NONE
Identification Features FEATHER, CLOUD
Inscription(s) IGI 583335893



June 15, 2023
IGI Report Number 583335893
NATURAL DIAMOND
ROUND BRILLIANT
4.46 - 4.49 x 2.83 mm
Carat Weight 0.35 CARAT
Color Grade N
Clarity Grade VS 2
Cut Grade EXCELLENT
Polish EXCELLENT
Symmetry EXCELLENT
Fluorescence NONE
Inscription(s) IGI 583335893

COLOR

D - F	G - J	K - M	N - R	S - Z	FANCY
Colorless	Near Colorless	Slightly Tinted	Very Light Color	Light Color	

CLARITY

IF	VS ¹⁻²	VS ¹⁻²	SI ¹⁻²	I ¹⁻²
Internally Flawless	Very Very Slightly Included	Very Slightly Included	Slightly Included	Included

© IGI 2020, International Gemological Institute FD - 10 20



THIS DOCUMENT WAS PRODUCED WITH THE FOLLOWING SECURITY MEASURES: SPECIAL DOCUMENT PAPER, INK SCREENS, WATERMARK, BACKGROUND DESIGN, HOLOGRAM AND OTHER SECURITY FEATURES NOT LISTED AND DO EXCEED DOCUMENT SECURITY INDUSTRY GUIDELINES.