



**INTERNATIONAL  
GEMOLOGICAL  
INSTITUTE**

**DIAMOND REPORT**

**ELECTRONIC COPY**

June 1, 2023  
IGI Report Number 582356801  
Description NATURAL DIAMOND  
Shape and Cutting Style ROUND BRILLIANT  
Measurements 5.36 - 5.41 x 3.32 mm

**GRADING RESULTS**

Carat Weight 0.60 CARAT  
Color Grade K  
Clarity Grade VS 2  
Cut Grade EXCELLENT

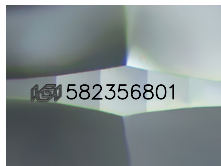
**ADDITIONAL GRADING INFORMATION**

Polish EXCELLENT  
Symmetry EXCELLENT  
Fluorescence NONE

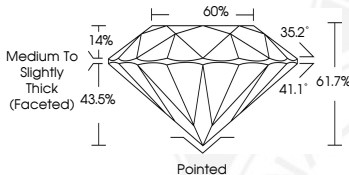
Identification Features FEATHER  
Inscription(s) IGI 582356801  
Comments: IDEAL CUT ROUND BRILLIANT



582356801



Sample Image Used



June 1, 2023  
IGI Report Number 582356801  
NATURAL DIAMOND  
ROUND BRILLIANT  
5.36 - 5.41 x 3.32 mm  
Carat Weight 0.60 CARAT  
Color Grade K  
Clarity Grade VS 2  
Cut Grade EXCELLENT  
Polish EXCELLENT  
Symmetry EXCELLENT  
Fluorescence NONE  
Inscription(s) IGI 582356801  
Comments: IDEAL CUT ROUND BRILLIANT



June 1, 2023  
IGI Report Number 582356801  
NATURAL DIAMOND  
ROUND BRILLIANT  
5.36 - 5.41 x 3.32 mm  
Carat Weight 0.60 CARAT  
Color Grade K  
Clarity Grade VS 2  
Cut Grade EXCELLENT  
Polish EXCELLENT  
Symmetry EXCELLENT  
Fluorescence NONE  
Inscription(s) IGI 582356801  
Comments: IDEAL CUT ROUND BRILLIANT

**COLOR**

D - F	G - J	K - M	N - R	S - Z	FANCY
Colorless	Near Colorless	Slightly Tinted	Very Light Color	Light Color	

**CLARITY**

IF	VS <sup>1-2</sup>	VS <sup>1-2</sup>	SI <sup>1-2</sup>	I <sup>1-2</sup>
Internally Flawless	Very Very Slightly Included	Very Slightly Included	Slightly Included	Included

© IGI 2020, International Gemological Institute

FD - 10 20



THIS DOCUMENT WAS PRODUCED WITH THE FOLLOWING SECURITY MEASURES: SPECIAL DOCUMENT PAPER, INK SCREENS, WATERMARK, BACKGROUND DESIGN, HOLOGRAM AND OTHER SECURITY FEATURES NOT LISTED AND DO EXCEED DOCUMENT SECURITY INDUSTRY GUIDELINES.