



578338431

DIAMOND REPORT

ELECTRONIC COPY



May 4, 2023
IGI Report Number 578338431
Description NATURAL DIAMOND
Shape and Cutting Style ROUND BRILLIANT
Measurements 6.89 - 6.94 x 4.36 mm

GRADING RESULTS

Carat Weight 1.32 CARAT
Color Grade J
Clarity Grade VS 2
Cut Grade EXCELLENT

May 4, 2023
IGI Report Number 578338431
Description NATURAL DIAMOND
Shape and Cutting Style ROUND BRILLIANT
Measurements 6.89 - 6.94 x 4.36 mm

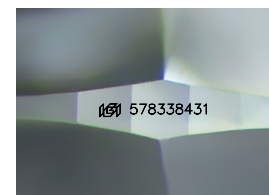
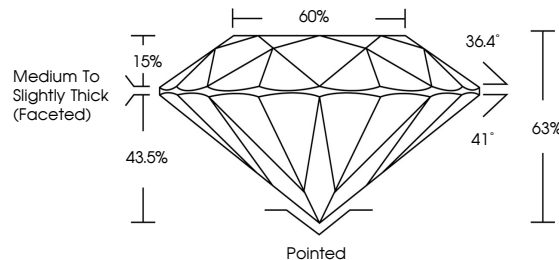
GRADING RESULTS

Carat Weight 1.32 CARAT
Color Grade J
Clarity Grade VS 2
Cut Grade EXCELLENT

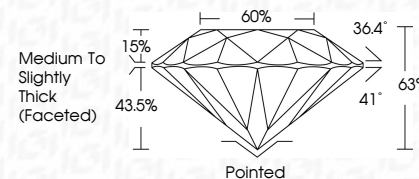
ADDITIONAL GRADING INFORMATION

Polish EXCELLENT
Symmetry EXCELLENT
Fluorescence NONE
Inscription(s) 578338431

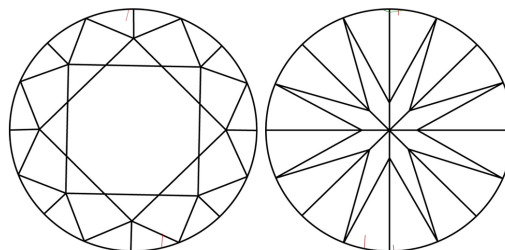
PROPORTIONS



Sample Image Used



CLARITY CHARACTERISTICS



KEY TO SYMBOLS

Red symbols indicate internal characteristics.
Green symbols indicate external characteristics.

COLOR

D - F	G - J	K - M	N - R	S - Z	FANCY
Colorless	Near Colorless	Slightly Tinted	Very Light Color	Light Color	

CLARITY

IF	VS ¹⁻²	VS ¹⁻²	SI ¹⁻²	I ¹⁻³
Internally Flawless	Very Very Slightly Included	Very Slightly Included	Slightly Included	Included

ADDITIONAL GRADING INFORMATION

Polish EXCELLENT
Symmetry EXCELLENT
Fluorescence NONE
Inscription(s) 578338431



IGI

May 4, 2023
IGI Report No 578338431
NATURAL DIAMOND
ROUND BRILLIANT
6.89 - 6.94 x 4.36 mm
Carat Weight 1.32 CARAT
Color Grade J
Clarity Grade VS 2
Cut Grade EXCELLENT
Depth 63%
Table 15%
Girdle Medium To Slightly Thick (Faceted)
Culet Pointed
Polish EXCELLENT
Symmetry EXCELLENT
Fluorescence NONE
Inscription(s) 578338431